



Visit
Tallahassee
Pretty. Unexpected.

What's Happening



APRIL 2026

Welcome to Tallahassee, home to larger-than-life festivals, electrifying nightlife, award-winning cuisine, over 700 miles of trails and endless outdoor adventures. Discover our undeniably pretty landscapes and our unexpected local experiences.

SCAN TO DOWNLOAD



Dining Out



From five-star dining to casual Brew Pub bites, Tallahassee's vast dining options satisfy those hunger cravings whether sweet and salty or hot and spicy. For a full list of delicious restaurants, go to VISITTALLAHASSEE.COM



PROOF – Tallahassee's largest craft brewery offering dozens of beers on tap, a large tasting room, expansive beer garden and shareable plates.
ProofBrewingCo.com



THE EDISON – Located on the site of Tallahassee's original power plant, this location offers upscale Florida cuisine with stunning Cascades Park views.
EdisonTally.com



HAWTHORNE BISTRO & BAKERY
This local favorite pairs refined southern cuisine with European techniques and seasonal ingredients sourced from local farms.
HawthornTLH.com



THE BARK – A vegetarian/vegan restaurant open for lunch and dinner known for its creative menu and intimate live music performances.
BarkFL.com



SAGE – This dining destination is celebrated for a sophisticated menu that blends French techniques with seasonal, southern-sourced ingredients.
SageTallahassee.com

The Adderley AMPHITHEATER AT CASCADES PARK

TheAdderleyAmphitheater.com

THURSDAY, APRIL 23

2026 TOUR

LAKE STREET DIVE



FRIDAY, APRIL 24

EARTH,
WIND & FIRE



TUESDAY, APRIL 28

ALABAMA SHAKES

with LAMONT LANDERS





Around Town



MAKE THE MOST OF YOUR VISIT WITH OUR FREE MOBILE APP



 LOOKING FOR MORE EVENTS? FOR A FULL LIST, GO TO VISITTALLAHASSEE.COM

APR 03 **First Friday @ Railroad Square Art District**
A colorful experience including gallery hopping, open studios and small businesses, live music and artful vibes. The monthly event is a local favorite starting at 5 p.m.

APR 03 - 05 **Chess Fest @ The Challenger Center**
Whether you're a seasoned chess player or just starting out, this exciting event has something for everyone.



APR 03 - 18 **FSU Flying High Circus: "Tall Tales" @ FSU**
FSU's circus performances offer a variety of jaw-dropping routines both in the air and on the ground which are sure to impress!

APR 11 **Pioneer Breakfast @ The Tallahassee Museum**
Enjoy a hearty farm breakfast of scrambled eggs, pancakes, sausage, grits, coffee, and more at the 1880s Big Bend Farm from 8-11 a.m.

APR 11-12 **Jazz & Blues Festival @ The Tallahassee Museum**
Get up and dance, sit back and enjoy the music, or explore the museum's 52 acres at one of the region's best two-day jazz, swing, and rhythm and blues music festivals



APR 12 - 19 **Tallahassee Tennis Challenger @ Forestmeadows Tennis Complex**
Catch thrilling matches and rising stars at the Tallahassee Tennis Challenger! Watch world-class tennis as top competitors battle for the title.

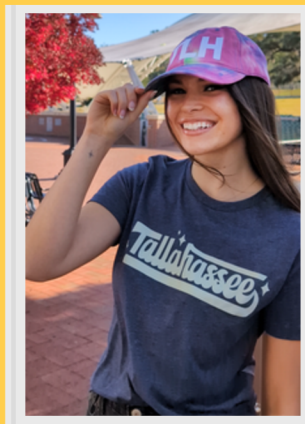


APR 18 - 19 **LeMoyne's 26th Annual Chain of Parks Art Festival @ Downtown Chain of Parks**
Experience the nation's #3 fine art festival at Tallahassee's Chain of Parks! Browse 160+ juried artists alongside live music, 3-D street art, and heritage re-enactments. With children's activities, local food, and craft cocktails, it's a premier weekend of outdoor culture and family fun in downtown Tallahassee.



APR 24 - 26 **Word of South Festival @ Cascades Park**
The weekend kicks off Friday night with **Earth, Wind & Fire** live from the Adderley Amphitheater, followed by a unique festival that blends the worlds of authors and musicians. This celebration of storytelling features a lineup of performances and readings, making it a must-attend event for both literary and music enthusiasts.

SHOP ♦ TLH ♦ LOCAL



Get expert guidance and information along with a wide range of products by local artisans from honey and candles to art, jewelry, and Tallahassee-themed gifts at the Visit Tallahassee Visitor Information Center & Gift Shop located behind the Adderley Amphitheater in Cascades Park.
Open Monday-Friday 9am-5pm and Saturday 10am-2pm

TRAILAHASSEE.COM



Butler Mill Trail

Take an engaging trek through historic plantation grounds, ceremonial mounds, and changing terrain on the Butler Mill Trail, located at Lake Jackson Mounds State Park.

