

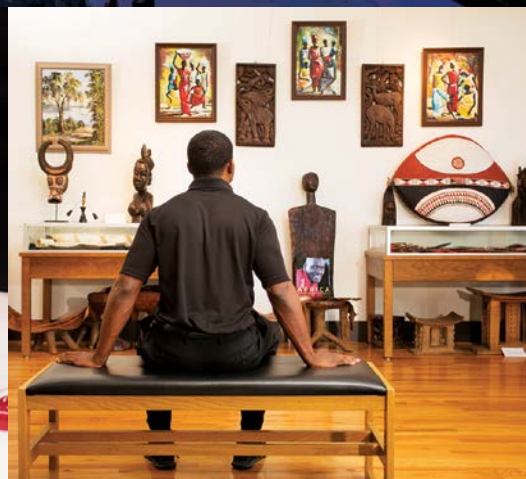
THE OFFICIAL 2025 GUIDE TO  
FLORIDA'S CAPITAL REGION



# Visit Tallahassee

Discover the Undeniable Natural Beauty of Florida's Capital Region

DAZZLING ENTERTAINMENT & EVENTS ■ EXQUISITE DINING ■ CULTURAL MASTERPIECES



# MORE THAN A MUSEUM... IT'S A JOURNEY



## THE MUSEUM CONFERENCE AND BANQUET CENTER

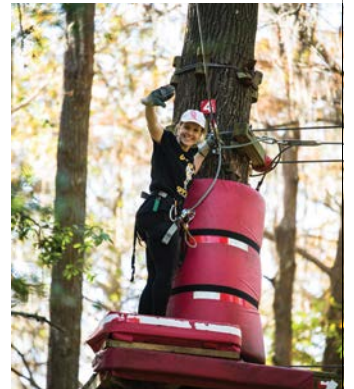
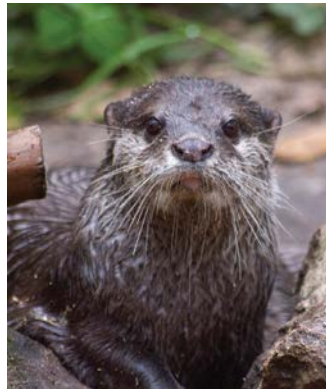
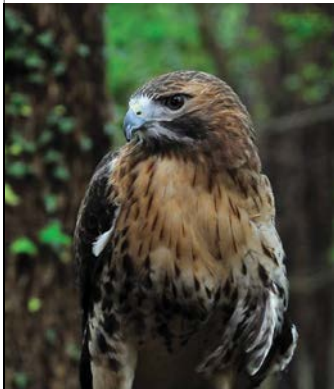
The museum is packed with more than 170 exceptional automobiles dating from 1894–2022, motorcycles, Batmobiles, the finest collection of Steinway pianos in the world (according to Steinway), Case knives, brass cash registers, sports memorabilia, pedal cars, antique boats, motors and much more! In addition to the museum, we are the largest locally owned banquet and conference center in Tallahassee.

Mon–Fri 8 am–5 pm  
Sat 10 am–5 pm | Sun 11 am–5 pm



6800 Mahan Drive  
(I-10 at 90 East, Exit 209A)  
(850) 942-0137  
TACM.com

# TALLAHASSEE MUSEUM



## 52 ACRES OF FASCINATION

One-of-a-kind adventures await, from close-up animal encounters to living history demonstrations. See live native wildlife, stroll scenic trails, explore 14 rare historic buildings and zip through the treetops on a Tree-To-Tree Adventures course. Enjoy lunch at the Trail Break Café and stop by our shop for a souvenir. It's an unforgettable experience for all ages.



**Tallahassee  
Museum**

TREE TO TREE ADVENTURES

3945 Museum Drive

(850) 575-8684

[TreeToTreeAdventures.org](http://TreeToTreeAdventures.org)

[TallahasseeMuseum.org](http://TallahasseeMuseum.org)



# LEON COUNTY



LEON COUNTY BOARD OF COUNTY COMMISSIONERS

PEOPLE  
FOCUSED.  
PERFORMANCE  
DRIVEN.

[LeonCountyFL.gov](http://LeonCountyFL.gov)

## ON BEHALF OF LEON COUNTY

**GOVERNMENT,** welcome to one of the most beautiful, diverse, historically rich, and naturally breathtaking places anywhere. We at Leon County are committed to creating opportunities for people and businesses to thrive through our continued focus on being a premier destination for outdoor adventure, arts and culture, and sports tourism.



**VINCENT S. LONG,**  
*County Administrator*

And this success has not happened overnight. It has taken serious investments, not only in our built environment, but in our human capital and societal infrastructure. Through these investments, we have created the world-renowned Apalachee Regional Park, an exceptional place for visitors and cross-country runners alike. In fact, this year we will be counting down as we prepare to host the 2026 World Athletics Cross Country Championships, after already hosting nearly 100,000 runners in more than 110 meets since the park opened 15 years ago. Read through this guide to learn more about how these efforts serve as economic drivers that continue to inspire residents and attract visitors.

Whether you have traveled from near or far, we hope you explore all that Leon County has to offer, including our rich cultural and historical sites, museums, arts, cuisine, and natural beauty. You have chosen an exciting time to visit Florida's Capital Community, and we hope you enjoy your visit and come back soon!

## VISION

A community that is safe, healthy and vibrant.

## MISSION

To efficiently provide public services which serve and strengthen our community.

## LEON COUNTY DIVISION OF TOURISM (VISIT TALLAHASSEE) THE 2025 VISITOR GUIDE TO FLORIDA'S CAPITAL REGION

### Visitor Information Center & Administrative Offices

(850) 606-2305, (800) 628-2866, Fax: (850) 606-2301, [VisitTallahassee.com](http://VisitTallahassee.com)

Executive Director: Kerri L. Post

Visitor Guide Editor: Scott Lindeman

Custom Content Editor: Zandra Wolfgram, Palm Beach Media Group

Art Director: Sarah Burger, Palm Beach Media Group

Production Coordinator: Tracy Mulligan, Palm Beach Media Group



*Visit  
Tallahassee*  
**Pretty. Unexpected.**

The Visitor Guide is published annually by Visit Tallahassee, a Division of Leon County Government and is designed and produced by Palm Beach Media Group, Tallahassee, Florida. This guide does not represent all businesses/organizations within the community. While every effort has been made to ensure the accuracy of this publication, changes or additions are welcome. Reproduction of the Visitor Guide in whole or in part is permitted with written permission from Visit Tallahassee.

# Find Your Inspiration



14

## EVENTS

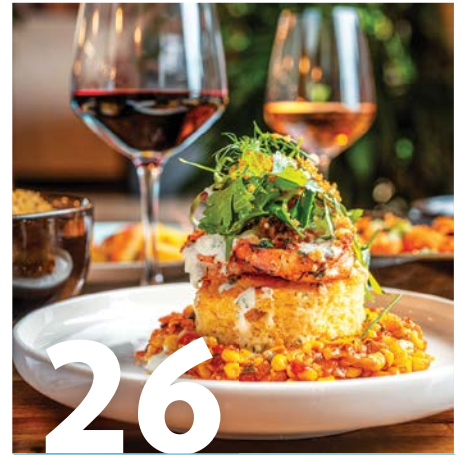
Enjoy a calendar full of entertaining events.



20

## OUTDOORS

Over 700 miles of biking, hiking, walking, equestrian and paddling trails to explore.



26

## DINING

Taste the expansive selection of cuisine at restaurants, local eateries, and cafés.



32

## ENTERTAINMENT

Live music, rooftop bars, craft breweries, nightlife, and more.



36

## ATTRACTIONS

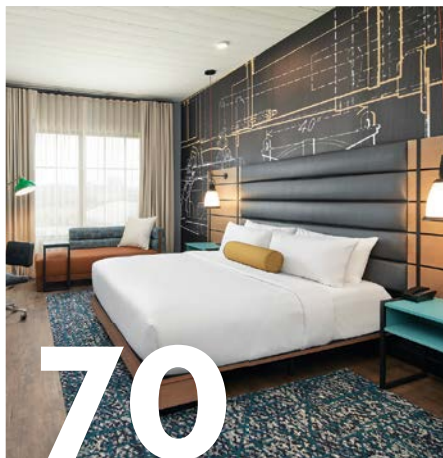
Experience historic sites, fascinating museums, gardens, and family-friendly attractions.



40

## ARTS & CULTURE

Dazzling galleries and performances that will expand your horizons and spark your imagination.

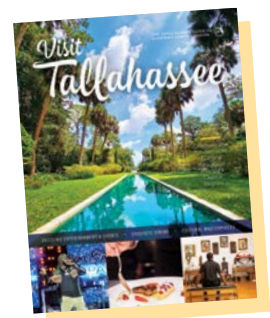


70

## STAY

Find the perfect place to rest your head for the night.

- 7 Plan Your Getaway
- 8 Four Ways to Visit Tallahassee
- 10 Entertainment Districts
- 24 Sports & Recreation
- 42 Doing Business in Tallahassee
- 56 Day Trips
- 72 Pet-Friendly Travel



### ON THE COVER:

Alfred B. Maclay Gardens showcases breathtaking natural beauty with colorful camellias, azaleas, and serene oak-lined trails, offering a tranquil escape into a picturesque botanical paradise.

# FAMU



## FLORIDA AGRICULTURAL AND MECHANICAL UNIVERSITY

Founded in 1887, Florida A&M University (FAMU) educates nearly 10,000 students from more than 70 countries. What sets FAMU apart is its mission to offer high-quality, affordable education while providing programs and services that help students achieve their goals. U.S. News and World Report ranks FAMU as No. 81 among Top National Public Universities and the No. 1 Public HBCU for the sixth consecutive year. For more information, visit [FAMU.edu](http://FAMU.edu).



1601 S. Martin Luther King Jr. Blvd.  
(850) 599-3000  
[FAMU.edu](http://FAMU.edu)

# Welcome to Tallahassee

WHETHER YOU'RE FROM just around the corner or from around the world, Tallahassee offers unforgettable experiences at every turn. Experience the thrill of college football, immerse yourself in rich history and the arts, and enjoy a dynamic calendar of events year-round.

Get ready for the excitement as Tallahassee hosts the 2026 World Athletics Cross Country Championships, bringing elite athletes from across the globe.

Catch incredible live performances at the Adderley Amphitheater, where top artists take the stage under the stars.

Explore more than 700 miles of breathtaking trails, perfect for outdoor adventures that showcase the region's natural beauty.

Then savor diverse dining options, from farm-to-table delights to exquisite cuisine crafted by innovative chefs.

I hope this guide inspires you to discover all of the exciting and serene experiences throughout Florida's capital region.

Enjoy your visit!

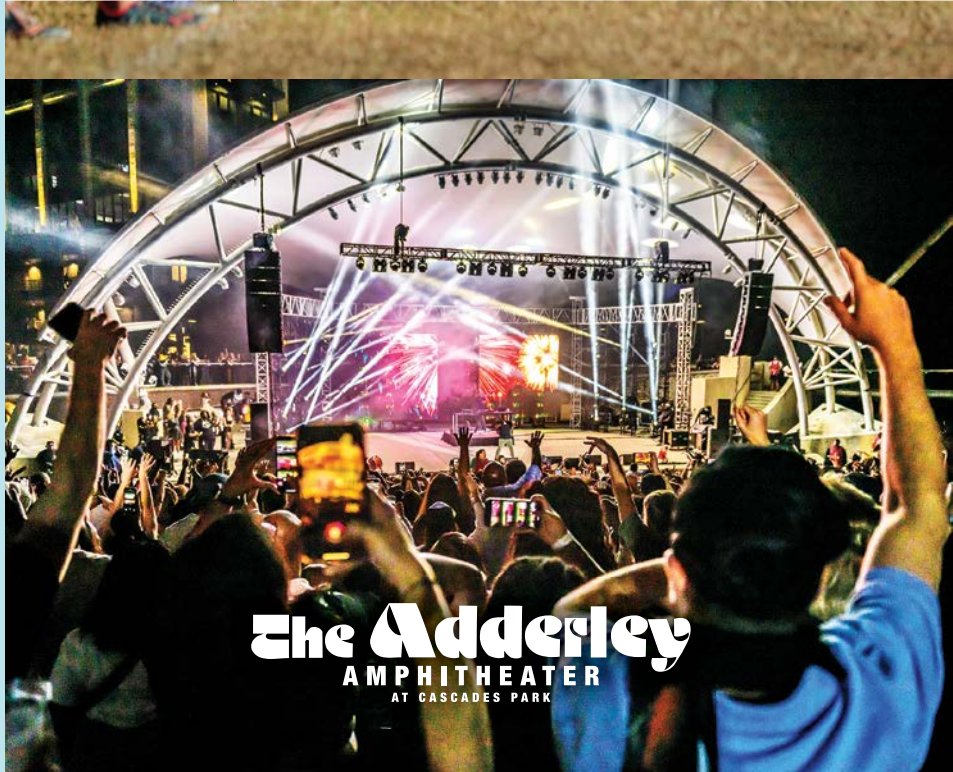


**KERRI L. POST**  
Director,  
Visit Tallahassee

## We're Glad You're Here!



WORLD ATHLETICS  
CROSS COUNTRY  
CHAMPIONSHIPS  
TALLAHASSEE 26



EXPLORE 700+ MILES OF TRAILS

# BLUEPRINT INTERGOVERNMENTAL AGENCY



## CONNECTING PEOPLE AND PLACES

Experience the perfect blend of relaxation and adventure with Blueprint parks, greenways, and trails. Enjoy mountain biking, skateboarding, pickleball, sand volleyball, or simply explore scenic nature paths ideal for bird watching. These spaces not only offer peaceful escapes and fun activities but also drive economic development. By investing in local infrastructure, Blueprint projects connect people and places, enhancing the quality of life and supporting long-term community growth one project at a time.



315 S. Calhoun St., Suite 450  
(850) 219-1060  
[BlueprintIA.org](http://BlueprintIA.org)







# Plan Your Getaway

## GET STARTED @ VISITTALLHASSEE.COM

Your trusted source for everything—area attractions, hotels, special events, shopping, and restaurants.

## SIGN UP FOR OUR NEWSLETTER

for the latest news on upcoming events, promotions, and more!

## FOLLOW US ON SOCIAL MEDIA

VISITTALLHASSEE  
 VISIT\_TALLY



## DOWNLOAD OUR FREE MOBILE APP

Available for iPhone and Android, search hotels, attractions, events, dining, and itineraries while on the go in Tallahassee.



→ Our **VISITOR INFORMATION CENTER & GIFT SHOP**, located in Cascades Park behind the Adderley Amphitheater, is here to assist you by providing information about the many places to see and things to enjoy while in Tallahassee and the surrounding area. Our gift shop features curated items from more than 30 local makers and artists in addition to Tallahassee themed T-shirts, hats, and gifts.

414 E. Bloxham St., Suite 115  
(850) 606-2305

## Getting Here is Easy

Whether visiting for the first time or making a return trip, Florida's Capital City is a short drive or flight from major destinations throughout the Southeast.



### DRIVING HERE

Located just 25 miles north of the Gulf of Mexico and 14 miles south of Georgia, Tallahassee is situated in the Florida Panhandle with convenient access provided by four major highways: I-10, U.S. 27, U.S. 319, and U.S. 90.

### TLH AIRPORT

Tallahassee International Airport (TLH) is served by American Airlines, Delta, and Silver—providing daily direct flights to Atlanta, Charlotte, Dallas/Fort Worth, Miami, Tampa, Fort Lauderdale, and Washington D.C.

# Four Ways to Visit Tallahassee

## ADVENTURE/ OUTDOORS

### START YOUR DAY

Fuel up for your day at **The Bada Bean**, where you can enjoy a hearty homestyle meal before your outdoor adventures begin.



DAVE BARFIELD

### MAKE A SPLASH

Kayak down the spring-fed **Wakulla River**. Wildlife abounds, so keep your eyes peeled for birds, deer, and year-round manatees. Kayak rentals available through **TNT Hideaway**.



## HISTORY BUFF

### HISTORICAL DOWNTOWN

Surrounded by historic markers and memorials in Cascades Park, the **AC Hotel Tallahassee University** offers a unique opportunity to explore Tallahassee's story firsthand.

### TALLAHASSEE'S ROOTS

Originally a cotton plantation, **Goodwood Museum & Gardens** offers a rich history of early Tallahassee. The 170-year-old main house now serves as a museum situated on 20 acres with breathtaking centuries-old live oaks and gardens.

### ON A MISSION

Transport back to 1703 with a visit to **Mission San Luis**. A living history site, the mission served as the principal village of the Apalachee and was the Spaniards' westernmost military, religious, and administrative capital.



## FREE SPIRIT

### ART

**LeMoyné Arts** is an iconic space that showcases the best of local and regional talent, offering a captivating glimpse into Tallahassee's creative side.

### STAY

Located in Tallahassee's Art District, the **Hyatt House** is the perfect place to stroll and check out local shops, treats, and entertainment.



### CAFFEINE BOOST

**Catalina Cafe** is a lively spot that is a favorite among students, locals, and visitors alike. Grab a latte and a pastry to fuel your day of exploring.

## WITH THE FAMILY



### BLAST OFF

Explore outer space at the **Challenger Learning Center** with a space mission simulator, hands-on exhibits, domed planetarium, and the area's largest IMAX® movie screen.

### ANIMALS & EXCITEMENT

See native Florida animals in their natural habitat at the **Tallahassee Museum** or, for even more excitement, soar over cypress swamps on zip lines reaching 60 feet off the ground.





### GO FOR A RIDE

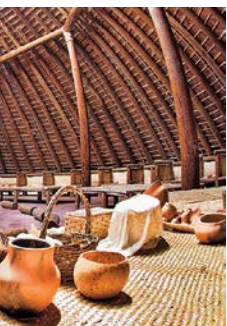
Test your skills on the exciting **Cadillac Trail** featuring technical single-track, exposed roots, and tight turns. Feel the need for speed? Take a few laps on the **Velosolutions® Pump Track** at Tom Brown Park.

### KICK BACK

After a day on the trails, relax at **Ology Brewing (Powermill)** in the expansive beer garden and tasting room.

### SETTLE IN, THEN SET OUT

Located in the heart of Tallahassee's CollegeTown District, **Hotel Indigo** is within walking distance to shops, bars, restaurants, and trails that connect Tallahassee to the surrounding area.



### AFRICAN AMERICAN HISTORY

Explore one of the most extensive and important exhibitions of African American artifacts at the **Meek-Eaton Black Archives** on the campus of **Florida A&M University**. Opened in 1908, the center is one of the largest repositories relating to African American history and culture in the Southeast.

### LIBRARY OF COCKTAILS

Enjoy elegant cocktails at the cozy **Bar 1903** housed in the former Walker Library, where each libation is a nod to a specific era.



DAVE BARFIELD

### LUNCH BREAK

A casual Izakaya-inspired Japanese pub in the heart of midtown, **Izzy Pub and Sushi** features Japanese and Pan-Asian small plates, sushi, and a one-of-a-kind Omakase experience.

### DON'T WORRY, BE HAPPY

Local favorite **Bird's Aphrodisiac Oyster Shack** offers fresh seafood, oysters, burgers, and ice-cold drinks in a funky and a laid-back setting.

### STAY AND PLAY

The **Drury Plaza Hotel's** complimentary breakfast and evening snacks are an ideal way to start and end an exciting day exploring Tallahassee with the family.

### SWEET TREATS

Watch candy being made by hand using tools from the 1800s at **Lofty Pursuits**. While you're there, learn how to yo-yo or play a board game, then sample an old-fashioned malt at the soda fountain.



### FUN FOR ALL AGES

An entertainment mecca with more than 40,000 square feet of fun, **District 850** offers bowling, laser tag, arcade games, food, drinks, escape rooms, and so much more!

## Accessible Tallahassee



We've partnered with Wheel the World to help everyone visit Tallahassee with verified accessibility. Wheel the World and Visit Tallahassee's mutual effort encourages people with disabilities to travel and enjoy unforgettable experiences.



### GETTING AROUND TALLAHASSEE

- ✓ Accessible transportation company Dial-a-ride by STARMETRO (850) 891-5199
- ✓ WAV cab companies are available.

Notice that you need to call in advance for both services.



*There is a world out there and our mission is to help everyone explore it without limits!*

# THE Entertainment Districts OF TALLAHASSEE



Hotel Indigo



CollegeTown

## COLLEGETOWN

CollegeTown is a vibrant, lively neighborhood that pulses with energy, especially during the school year. Nestled near Florida A&M University and Florida State University, it's a hub for students and young professionals, offering a dynamic mix of dining, shopping, and entertainment options.

The area is known for its trendy bars, cozy coffee shops, and diverse eateries, making it a popular spot for social gatherings. With regular events, live music, and a youthful atmosphere, CollegeTown is the go-to district for those seeking to relive the college experience.



Madison Social



The Monroe at SoMo Walls



Proof Brewing Company



Florida A&M University

## SOUTHSIDE

Discover the charm of Tallahassee's Southside, a welcoming district brimming with unique restaurants, shops, and breweries. Whether you're craving Southern comfort food at Earley's Kitchen, authentic soul food at Olean's Cafe, or contemporary cocktails and cuisine at the newest arts and entertainment district in Tallahassee, SoMo Walls, you'll find an array of restaurants including The Monroe, Foxtail Coffee Co., public art exhibits, and Walls Distilling. Cozy cafes and bakeries invite you to unwind with a cup of coffee or a sweet treat, while local craft breweries like Proof Brewing offer the perfect spot to savor a locally brewer pint.

Explore boutique shops and markets filled with handmade goods, vintage treasures, and local art. The Southside is a vibrant, evolving destination that celebrates Tallahassee's local flavor and creativity.

PHOTOS BY CHANEL VAN REENAN (COLLEGETOWN), JOHN MORAN (ST. MARKS), LAWRENCE DAVIDSON (FAMU), KIRA DERRYBERRY (HEARTH & SOUL), AND AMANDA HUNTER (HANGAR 38)

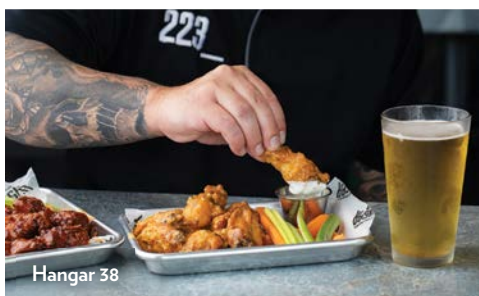
## MARKET DISTRICT

Located off I-10 at Exit 203, the Market District is a must-visit destination for those looking to explore a upscale mix of locally owned boutiques, diverse restaurants, and beautiful gardens.

Discover unique treasures at **Hearth & Soul**, offering curated finds for the mind, body, and home, or browse premium men's fashion at **Nic's Toggery**, a Tallahassee staple for nearly 75 years. Satisfy your cravings with global cuisine, from the charming French ambiance of **Little Paris** to the farm-to-table goodness at **Jer's Love on a Plate**.

Don't miss the **Alfred B. Maclay Gardens State Park** during its peak blooming season in the Spring to witness a stunning array of blooming flowers.

*For more to see in Market District, please see page 64.*



## UPTOWN/BANNERMAN CROSSINGS

Located on the northeast side of Tallahassee, these districts feature unique shops, spas, elevated dining experiences and family fun. Enjoy live music or a movie with friends on the outdoor pavilion or indulge at one of the many fine-dining options including **Dao**, **Rae's**, and **Blu Halo** or dive into fresh seafood and live music at **Tallahassee Fish House**.

When it's time to play, let the good times roll at **Hangar 38**, offering bowling, an arcade, a full bar and an elevated dining experience.

# THE Entertainment Districts OF TALLAHASSEE



Midtown Reader



Black Radish



Liberty Bar and Restaurant

## MIDTOWN

The Midtown entertainment district is a vibrant area where historic charm meets modern flair. Known for its walkable mix of restaurants, bars, and shops, Midtown is a go-to spot for both locals and visitors. Highlights include Midtown Reader, an inviting independent bookstore perfect for browsing and finding your next great read, and Black Radish, a chic restaurant offering farm-to-table cuisine in a cozy setting. With live music, art events, and a festive atmosphere, Midtown offers a rich cultural experience in the heart of the city.

*For more to see in Midtown, please see page 58.*

## DOWNTOWN

Downtown Tallahassee is where history and politics go hand in hand. Witness government in action alongside museums and important civil rights markers. No trip to Tallahassee is complete without a visit to the Capitol Complex comprising the Capitol building, House of Representatives, Senate Chambers and the Historic Capitol Museum. Don't miss the panoramic views from the 22nd floor observatory and art gallery to get a bird's eye view of the entire region.

Enjoy a taste of history at Bar 1903 and Hayward House or indulge in fine dining among influential decision makers at Il Lusso, Savour, The Assembly on Adams, or The Huntsman.

Take a leisurely stroll through Cascades Park, offering walking paths that weave around fountains, flowers and historic markers and check out the concert schedule for The Adderley Amphitheater.

Cap off your evening with a cocktail and some of the best views of Cascades Park from Charlie Park, located on the rooftop of the AC Hotel by Marriott.

*For more to see in Downtown, please see page 49.*



Hayward House



The Adderley Amphitheater



Cascades Park

PHOTOS BY MARK WALLHEISER (MIDTOWN READER), YOUR SOCIAL, INC. (BLACK RADISH), DAVE BARFIELD (LIBERTY), AND STEVEN SACCO (AMPHITHEATER)



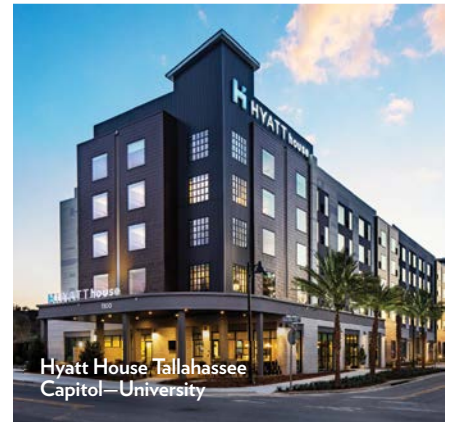
## RAILROAD SQUARE ART DISTRICT

A World War II-era industrial warehouse park turned urban core art district, the 10-acre Railroad Square is a haven for Tallahassee creatives with dozens of shops, galleries, and small businesses. Hunt for artistic finds at **The Other Side Vintage** and **621 Gallery** before testing your pinball skills at **Flippin' Great Pinball**, featuring over 40 vintage arcade and pinball games.

Once you've worked up an appetite, treat yourself to some of the most diverse offerings in Tallahassee at **Halisi Africa Afro-Fusion Café**, **Pineappetit**, or **Flamingoz**.

*Each business has its own opening hours. Check out the business directory at [ArtDistrict.com](http://ArtDistrict.com).*

*For more to see in Railroad Square Art District, please see page 62.*



Hyatt House Tallahassee  
Capitol-University



Flippin' Great Pinball



The Other Side Vintage

# What's Happening

## JANUARY

### DEMP WEEK

Visit [Tallahassee.com/DempWeek](http://Tallahassee.com/DempWeek)

DEMP WEEK is a week-long festival showcasing diverse artists, celebrating life, culture, and community. The event was founded by renowned local musician DJ DEMP.

## FEBRUARY

### TALLAHASSEE MARATHON & HALF MARATHON DOWNTOWN

[TallahasseeMarathon.com](http://TallahasseeMarathon.com)

The course showcases local landmarks, parks, neighborhoods and business districts. USATF-certified, Boston Marathon qualifier.



### AKC NORTH FLORIDA CLASSIC CLUSTER DOG SHOW

NORTH FLORIDA FAIRGROUNDS  
[ORKC.com](http://ORKC.com)

Where 2,000 American Kennel Club (AKC)-registered purebred dogs, representing more than 200 breeds, compete in the show ring and a half-dozen performance competitions.

### APRIL LEMOYNE CHAIN OF PARKS ART FESTIVAL

DOWNTOWN CHAIN OF PARKS [ChainOfParks.com](http://ChainOfParks.com)

Ranked as the No. 1 art festival in Florida by Sunshine Artist Magazine, and No. 7 nationwide, this event is typically held during the third weekend of April at the Chain of Parks in downtown. Attracting 170 juried artists from around the country, the festival under the oaks includes a 1560s living encampment, "Be the Art" photo opportunities for visitors, an art village for children, live entertainment, and food.



### APRIL SPRINGTIME TALLAHASSEE FESTIVAL & GRAND PARADE

DOWNTOWN [SpringtimeTallahassee.com](http://SpringtimeTallahassee.com)

Springtime Tallahassee kicks off with a concert by a national recording artist on Friday night and continues Saturday with the Grand Parade—one of the largest and most celebrated parades in the Southeast—the Jubilee in the Park art show, the Children's Park, and 5K and 10K runs.

### HIGHLAND GAMES & SCOTTISH FESTIVAL

APALACHEE REGIONAL PARK

[TallyHighlandGames.com](http://TallyHighlandGames.com)

Watch some of the strongest athletes compete in sporting events dating back to the 11th century.

### HARAMBEE FESTIVAL

CASCADES PARK/  
THE ADDERLEY AMPHITHEATER

[My.FAMU.edu/Event/Harambee](http://My.FAMU.edu/Event/Harambee)

A community-wide cultural celebration in honor of Black History Month with musical and dance performances, cultural art, poetry, and inspiring seminars.

### URBAN GORILLA

BIKE EVENT

DOWNTOWN

[Facebook.com/Groups/Tallahassee.MountainBike](http://Facebook.com/Groups/Tallahassee.MountainBike)

The Annual Just Riding Around (JRA) event celebrates Tallahassee's great network of trails and bicycling lifestyle.

## MARCH



### PRIDEFEST

CASCADES PARK

[TallahasseePride.com](http://TallahasseePride.com)

Tallahassee Pridefest is an annual celebration providing the LGBTQ and allied community with an opportunity to come together and promote peace and understanding, highlighting the importance of diversity, acceptance, and equality.

### JUBILEE MUSIC FESTIVAL

CASCADES PARK/  
THE ADDERLEY AMPHITHEATER

[AdderleyAmphitheater.com](http://AdderleyAmphitheater.com)

Uplifting gospel music festival featuring an extraordinary lineup of gospel music luminaries.





**STAY IN THE LOOP!**

Scan now for a full list of events happening in Tallahassee all year long.

**FIRST ROBOTICS COMPETITION**

LAWSON CENTER AT FAMU

[FirstInspires.org](http://FirstInspires.org)

Competitors build and program industrial-size robots to play a difficult field game against like-minded competitors.

**BATTLE OF NATURAL BRIDGE REENACTMENT**

NATURAL BRIDGE BATTLEFIELD HISTORIC STATE PARK

[FloridaStateParks.org/Park/Natural-Bridge](http://FloridaStateParks.org/Park/Natural-Bridge)

This two-day event reenacts the second largest Civil War battle in Florida and includes a period encampment and demonstrations.

**APRIL**

**JAZZ & BLUES FESTIVAL & PIONEER BREAKFAST**  
TALLAHASSEE MUSEUM

[TallahasseeMuseum.org](http://TallahasseeMuseum.org)

This two-day jazz and rhythm and blues festival includes performances by established Big Bend artists and rising stars.

**THOMASVILLE ROSE SHOW & FESTIVAL**

HISTORIC DOWNTOWN THOMASVILLE, GA

[DowntownThomasville.com](http://DowntownThomasville.com)

Festivities include a juried rose show, flower shows, parades, concerts, a street dance, fireworks, arts-and-crafts vendors and food.

**WORM GRUNTIN' FESTIVAL**

HISTORIC DOWNTOWN SOPCHOPPY, FL

[WormGruntinFestival.com](http://WormGruntinFestival.com)

This unique festival features worm gruntin' demonstrations, arts-and-crafts vendors, and family-friendly live entertainment.

**MAY**

**SOUL OF SOUTHSIDE**

ANITA FAVORS PLAZA

[SOSFestTLH.com](http://SOSFestTLH.com)

The Soul of Southside Arts & Humanities Festival is an intergenerational festival

**APRIL WORD OF SOUTH FESTIVAL**

CASCADES PARK/THE ADDERLEY AMPHITHEATER

[WordOfSouthFestival.com](http://WordOfSouthFestival.com)

This annual three-day festival celebrates literature and music with a variety of musical performances, literary discussions with authors, poetry readings, interviews, book signings, and a dedicated children's program. It is a unique blend of renowned and new musicians and writers, and an exploration of the relationship between the two disciplines.



PHOTOS BY BOB O'LARY (LEMOYNE), LAWRENCE DAVIDSON (SPRINGTIME), AND USGIRL / ISTOCK / GETTY IMAGES PLUS (PRIDE FLAG)



**ONGOING**

**DOWNTOWN MARKETPLACE**  
DOWNTOWN

[DowntownMarket.com](http://DowntownMarket.com)

Open-air market every Saturday from March–November, with local produce, baked goods, flowers, native plants, arts and crafts.

**FIRST FRIDAY AT RAILROAD SQUARE**

RAILROAD SQUARE ART DISTRICT

[ArtDistrict.com](http://ArtDistrict.com)

Spend the "First Friday" of every month browsing art galleries, artists studios, and shops with live music and food.

**OPENING NIGHTS PERFORMANCES AT FSU**  
VARIOUS LOCATIONS

[OpeningNights.FSU.edu](http://OpeningNights.FSU.edu)

Presented by Florida State University, these performances are scheduled throughout the year by acclaimed artists, musicians, comedians, and authors.

**DOWNTOWN CONCERT SERIES**

CASCADES PARK/ THE ADDERLEY AMPHITHEATER

[Facebook.com/TLHDowntown](http://Facebook.com/TLHDowntown)

Free monthly concerts offer family-friendly activities, craft vendors, food, and beverages.

**TALLAHASSEE FARMERS MARKET**

[TallahasseeFarmersMarket.com](http://TallahasseeFarmersMarket.com)

All vendors at the market provide products that are either locally grown and produced or are regionally sourced, including fresh produce, meats, cheeses, and seafood.



**MAY SOUTHERN SHAKESPEARE FESTIVAL**

CASCADES PARK/  
CAPITAL CITY AMPHITHEATER  
[SouthernShakespeareFestival.org](http://SouthernShakespeareFestival.org)

This free, open-air production of Shakespearian works features celebrity performances, medieval-costumed characters, food, and beverages.



**MAY EMANCIPATION CELEBRATION**

KNOTT HOUSE MUSEUM [MuseumOfFloridaHistory.com](http://MuseumOfFloridaHistory.com)  
Held on the steps of the Knott House, this event commemorates and reenacts the announcement of the Emancipation Proclamation that took place on May 20, 1865, nearly a full month before the last enslaved people learned about their freedom.

that celebrates the rich, diverse neighborhood history and cultural value that exists in Tallahassee's Southside.

**TALLAHASSEE SOCCER CLUB**  
GENE COX STADIUM

[TLHSoccerClub.com](http://TLHSoccerClub.com)  
The Tallahassee Soccer Club Battle Lions are a minor league professional men's soccer team with games from May through July.

**TLH RECKONING SOCCER CLUB**

GENE COX STADIUM  
[TLHReckoning.com](http://TLHReckoning.com)  
Watch the first women's pre-professional soccer club in Tallahassee.

**TOUR OF GARDENS**

ALFRED B. MACLAY GARDENS  
[FriendsOfMaclayGardens.org](http://FriendsOfMaclayGardens.org)  
The tour begins with breakfast in the park followed by a self-guided tour of Tallahassee's finest public and private gardens.

**JUNE**

**JEFFERSON COUNTY WATERMELON FESTIVAL**  
HISTORIC DOWNTOWN MONTICELLO, FL

[MonticelloJeffersonFL.com](http://MonticelloJeffersonFL.com)  
Festivities include a parade, pageant, watermelon carving and seed spitting contests, craft vendors, a car show, children's theater, and a 5K run.



**TOMATO FESTIVAL**  
GOODWOOD MUSEUM & GARDENS

[RedHillsFarmAlliance.com](http://RedHillsFarmAlliance.com)  
Family-friendly event with local farmers, breweries, and, of course, tomatoes!

**JULY**

**INFINITY CON**  
TUCKER CIVIC CENTER

[InfinityConTally.com](http://InfinityConTally.com)  
This family-friendly comic-book and pop-culture convention features major and independent comic books, video and tabletop gaming, and anime, with events and entertainment for all ages, all weekend long.

**CELEBRATE AMERICA 4TH OF JULY**

TOM BROWN PARK  
[Talgov.com/Parks/July4](http://Talgov.com/Parks/July4)  
Celebration includes a full day of live entertainment, food, exhibitors, children's activities, and a dramatic fireworks display.

**SWAMP STOMP**  
TALLAHASSEE MUSEUM

[TallahasseeMuseum.org](http://TallahasseeMuseum.org)  
Outdoor music festival featuring Americana and bluegrass performances, games, animal encounters, living history and educational activities.

## AUGUST

### GRAPE HARVEST FESTIVAL FAMU CENTER FOR VITICULTURE AND SMALL FRUIT RESEARCH

[FAMUNews.com/  
Grape-Harvest-Festival](http://FAMUNews.com/Grape-Harvest-Festival)

Featured activities include grape stomping contest, grape throwing, grape and wine sampling, and a 2K and 5K vineyard run.

### TALLAHASSEE BEER FESTIVAL

TUCKER CIVIC CENTER  
[TLHBeerFest.com](http://TLHBeerFest.com)

Sample over 200 different beers, ciders, ales, meads, and sparkling sodas from more than 75 home brewers and breweries.

## OCTOBER

### BLESSING OF THE ANIMALS MISSION SAN LUIS

[MissionSanLuis.org](http://MissionSanLuis.org)

Annual event recognizing St. Francis of Assisi, the patron saint of animals. Includes free pet blessings by area clergy and living history on the historic site.

### ST. MARKS STONE CRAB FESTIVAL

[StMarksStoneCrabFest.com](http://StMarksStoneCrabFest.com)

Celebrate the opening of stone crab season.

### MONARCH BUTTERFLY FESTIVAL

ST. MARKS NATIONAL  
WILDLIFE REFUGE

[Fws.gov/Refuge/St\\_Marks](http://Fws.gov/Refuge/St_Marks)

View thousands of monarch butterflies as they prepare



for their journey across the Gulf of Mexico.

### FARM TOUR

VARIOUS LOCATIONS

Self-guided tours of area farms, ranches and gardens with family-friendly activities, animal encounters, workshops, food and beverages.

### GREEK FOOD FESTIVAL HOLY MOTHER OF GOD GREEK ORTHODOX CHURCH

[HMOG.org/Festival](http://HMOG.org/Festival)

Enjoy the best Greek food including pastries, gyros, spanakopita and moussaka, ouzo, music and dancing.

## NOVEMBER

### BRADLEY'S OLD FASHIONED FUN DAY

BRADLEY'S COUNTRY STORE

[BradleysCountryStore.com](http://BradleysCountryStore.com)

Fun for the whole family with live music, clogging, sugar cane grinding, syrup making, pony rides, and more.

### NORTH FLORIDA FAIR NORTH FLORIDA FAIRGROUNDS

[NorthFloridaFair.com](http://NorthFloridaFair.com)

The region's largest agricultural fair features 4-H and Future Farmers of America competitions and exhibits, a livestock show, arts and crafts, carnival rides, games, and food vendors.

### PLANTATION WILDLIFE FESTIVAL

MULTIPLE LOCATIONS  
THOMASVILLE, GA

[PWAf.org](http://PWAf.org)

Artists join sporting and



### DECEMBER MARKET DAYS

NORTH FLORIDA FAIRGROUNDS [TallahasseeMuseum.org/MarketDays](http://TallahasseeMuseum.org/MarketDays)

Traditionally held on the first weekend of December, Market Days is one of the Southeast's largest juried arts and crafts shows, featuring handmade creations from more than 275 artisans.

wildlife enthusiasts for this celebration of art and outdoor culture of the Red Hills region.

## DECEMBER

### VICTORIAN CHRISTMAS

HISTORIC DOWNTOWN  
THOMASVILLE, GA

[DowntownThomasville.com](http://DowntownThomasville.com)

Enjoy a Christmas celebration from the 1890s with carriage rides, strolling carolers, a live nativity scene, and Santa.

### WINTER FESTIVAL & JINGLE BELL RUN

DOWNTOWN

[Talgov.com/Parks/Parks-Winter.aspx](http://Talgov.com/Parks/Parks-Winter.aspx)

A 3K Jingle Bell Run/Walk through downtown, a parade, live entertainment, arts and crafts and, tree lighting ceremony.

### NEW YEARS EVE COUNTDOWN AT CASCADES

CASCADES PARK/  
THE ADDERLEY AMPHITHEATER

[TallahasseeDowntown.com](http://TallahasseeDowntown.com)

Family-friendly event including hot chocolate, entertainment, and fireworks.



### STAY IN THE LOOP!

Scan now for a full list of events happening in Tallahassee all year long.



## SEPTEMBER-NOVEMBER FOOTBALL WEEKEND BLOCK PARTIES

MULTIPLE LOCATIONS [VisitTallahassee.com/Events](http://VisitTallahassee.com/Events)

The excitement of college football in Tallahassee isn't limited to game days. Kick off your football weekend on Friday nights before home football weekends for FSU and FAMU that bring the city to life. CollegeTown Block Party, Frenchtown Rising, and Downtown Get-Down bring together alumni, fans, friends, and families with live music, fun, food, and festivities.

# TALLAHASSEE STATE COLLEGE (TSC)



## LET US HOST YOUR NEXT EVENT

Whether you're planning a conference, seminar, banquet, trade show or training session, Tallahassee State College offers venues to meet your needs. With spaces that accommodate up to 800 attendees, we provide a setting for events of all sizes. Choose from our Main Campus, the Center for Innovation in Downtown Tallahassee or our centers in Gadsden and Wakulla counties. Let us help you create a memorable event!



Reserve your space today  
(850) 201-6058  
Events@TSC.FL.edu

# INNOVATE. ACCELERATE. ELEVATE.



## TALLAHASSEE INTERNATIONAL AIRPORT

Experience where innovation meets convenience at Tallahassee International Airport. Enjoy fast, efficient service, personalized attention, and effortless access to and from Florida's Capital City. With a focus on enhancing your comfort and elevating every journey, we ensure a smooth travel experience grounded in southern hospitality—every time you fly.



**TALLAHASSEE**  
INTERNATIONAL AIRPORT

[TLHAirport.com](http://TLHAirport.com)



# Outdoors

**Rolling hills,** lush greenery, spring-fed rivers, and year-round mild temperatures make outdoor recreation one of the area's most sought-after experiences and sets us apart from anywhere else in Florida.

Whether it's a run along a wooded path, navigating a challenging mountain bike course or a trail ride on horseback, see for yourself why the Florida Department of Environmental Protection recognized us as a Florida Trail Town. Step outside and enjoy one of Tallahassee's finest and most distinguishing assets.

» **An extensive trail system** spans more than 700 miles and features some of the top-ranked technical mountain biking and trail running spots in Florida.

» **Lakes and spring-fed rivers** thrill kayak enthusiasts with birds, wildlife, and manatee sightings.

» The region is home to some of the nation's last remnants of **the great longleaf pine forests**

and one of the nation's largest populations of red-cockaded woodpeckers.

» **On two migratory flyways,** Tallahassee is one of the top birding locations in the country.

» Nine designated roads provide **78 miles of canopy roads,** perfect for a scenic drive. They're favorites among cyclists, especially Centerville Road.

## TRAILHASSEE.COM

TRAILHASSEE.COM is your personal guide to our trail system with detailed information about the 700-plus miles of fun-filled trails in and around Tallahassee.

✓ Activities | ✓ Locations | ✓ Descriptions | ✓ Photos





Miccosukee Greenway

COURTESY OF VISIT FLORIDA

THOMAS M. SCOTT



## MOUNTAIN BIKING

### NOT ALL OF FLORIDA IS FLAT!

Mountain biking in Tallahassee? You bet your hardtail. From rugged and rooty to smooth and scenic, hundreds of miles of trails are just waiting to be bombed, roosted, and shredded. Afterward, cool down and rest up for round two at our many biker-friendly spots all over town.

If ripping through single-track dips and dives sounds like your kind of rush, Florida's Capital City delivers. **Tom Brown Park** boasts miles and miles of incredible bike routes, including two famous flow trails, **Kudzilla** and the **Gun Range**. While you're exploring Tom Brown, take a few laps on the park's exhilarating **Velosolutions® Pump Track** that's guaranteed to get your heart racing.



#### MBTALLAHASSEE.COM

Whether you're a novice or a more experienced rider wanting something a little bumpier and faster, you're in luck! Find single tracks, loops, multiuse trails, and even gnarly technical trail features like switchbacks, log rides, step-ups, roller coasters, wall rides, and more across our entire trail system at **MBTallahassee.com**.



#### TAP INTO LOCAL EXPERTS AT LOCAL SHOPS

- » Epic Bikes
- » Great Bicycle Shop
- » Joe's Bike Shop
- » Trek Bicycle Tallahassee



Edward Ball Wakulla Springs State Park

**Visiting Riders** Affiliated with the Southern Off-Road Bicycle Association (SORBA) and the International Mountain Bike Association, the Tallahassee Mountain Bike Association (TMBA) welcomes visitors to join in weekly group rides and is eager to take riders out on the best trails in Tallahassee. Learn more at **TMBA.bike**.



Wakulla River



Wacissa River



## PADDLING

Wacissa River



Lake Bradford

## TOP 3 PLACES TO PADDLE

### TAKE TO THE WATER WITH HARRY SMITH OUTDOORS

BY **HARRY SMITH**, OUTFITTER, GUIDE, OWNER OF HARRY SMITH OUTDOORS

Having grown up in Tallahassee with the outdoors as my playground, exploring the area's 700-plus miles of trails, hiking, biking, fishing, and kayaking became my way of life. The area's freshwater, spring-fed rivers—Wakulla, Wacissa, and St. Marks—are easy to explore and offer some of the most diverse wildlife viewing in Florida.

Paddling trails also lead to secluded hiking trails offering otherworldly scenes of nature, like the quiet and serene Cathedral of Palms or the Leon Sinks Trail in the Apalachicola National Forest, with fairytale-like views providing a glimpse into “Old Florida.”

Harry Smith is a Tallahassee native who grew up on the banks of Lake Talquin fishing, boating, hiking, and camping. Those pastimes ignited a passion that carries on today. Now as an outfitter, guide and owner of Harry Smith Outdoors, he takes great joy in showing people the beauty that Tallahassee and the surrounding area have to offer.

Those looking for a more social paddling experience enjoy Lake Bradford, where on the most southern portion of the lake lies the **Florida State Reservation**, or “The Rez.” It's a popular spot to rent kayaks, canoes, paddleboards, and even sailboats to explore the wonders of Lake Bradford. **Lake Piney Z** takes center stage to **Lafayette Heritage Trail Park** on Tallahassee's east side, where visitors can enjoy many outdoor activities—biking, fishing, running, walking, kayaking and canoeing—without ever leaving the city.

- » **RIVER:** The Wacissa, because all parts of it are outstanding. The upper headwaters section is easy to reach, beautiful, and full of wildlife.
- » **SPRING:** Garner Springs off the Wacissa River. It is reached by a narrow spring that runs about a third of a mile, where visitors often see wildlife—otters, baby alligators, barred owls, etc.
- » **LAKE:** Put in your canoe or kayak at Jack Vause Landing to explore the roughly 10,000-acre Lake Talquin.





# BIRDING

BY **LIZ SCHOLD**, GREAT FLORIDA BIRDING AND WILDLIFE TRAIL COORDINATOR, PUBLIC ACCESS SERVICES OFFICE, FLORIDA FISH AND WILDLIFE CONSERVATION COMMISSION

Tallahassee lies in one of the most biologically diverse regions of the United States, making it a perfect destination to see incredible birds and wildlife. Whether you prefer a leisurely hike in a local park or an off-the-beaten-path adventure, there is abundant wildlife to see almost everywhere you look.

St. Marks National Wildlife Refuge is a must-visit for anyone who is birding in the Panhandle. A leisurely drive to the coast along Lighthouse Road will yield sightings of bald eagles, wading birds and flocks of winter ducks. The refuge has also seen many unexpected species over the years, with recent visitors including a vermilion flycatcher and an American flamingo! Visitors to Edward Ball Wakulla Springs State Park can take a guided boat tour to see black-crowned night herons, flocks of white

ibis and even manatees in the cooler winter months. A drive along quiet wildflower-lined roads will take you to Apalachicola National Forest, one of the best places in the country to see the federally endangered red-cockaded woodpecker among the longleaf pines.

You don't have to travel far to see incredible wild sights—within county limits, you can visit Elinor Klapp-Phipps Park, Alfred B. Maclay Gardens State Park and Lafayette Heritage Trail Park. Explore miles of well-maintained trails as you look for migrating birds in spring and fall. Be sure not to overlook Lake Elberta Park; this small park just minutes from downtown boasts a bird list of nearly 200 species. For an in-town adventure that's off the beaten path, explore L. Kirk Edwards Wildlife and Environmental Area, where you can see Bachman's sparrows, wood storks, and gopher tortoises.

Grab your binoculars and camera, put on your hiking boots and hit the trail—in Tallahassee, every day is a great day to go birding!



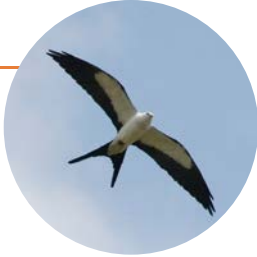
Perched on two migratory flyways, Tallahassee is a birding paradise that is home to over 300 species of birds ranging from red-cockaded woodpeckers to the rare American flamingo! With 20 spots throughout the region on the Great Florida Birding and Wildlife Trail, an abundance of wildlife awaits.

# SPOT THESE LIFE LIST BIRDS

\*Recommendations from Liz

## Swallow-Tailed Kite

Swallow-tailed kites are undoubtedly one of the most beautiful birds in Florida, with their distinctive silhouette and graceful flight.



## Purple Gallinule

The rich purple and green plumage of this marsh bird contrasts with their startlingly bright yellow legs and red and yellow bill.



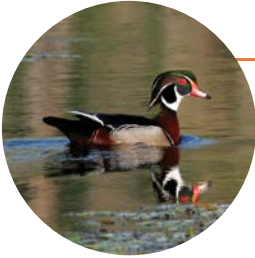
## Roseate Spoonbill

With their vibrant pink plumage and namesake spoon-like bills, these distinctive birds are always fun to see.



## Wood Duck

With their colorful plumage and distinctive crest, wood ducks are one of the most beautiful species of waterfowl around.



## Great Egret

The showy feathers of the great egret in its breeding plumage are undoubtedly gorgeous. Once hunted nearly to extinction for their plumes, these birds are once again a common sight.



PHOTOS COURTESY OF DAVID MOYNAHAN AND MEAGHAN MANNING (PURPLE GALLINULE)

# RESOURCES

- » **APALACHEE AUDUBON CHAPTER**  
North Florida Chapter of the National Audubon Society  
[Apalachee.org/AAS](http://Apalachee.org/AAS)
- » **GREAT FLORIDA BIRDING AND WILDLIFE TRAIL**  
Information by region  
[FloridaBirdingTrail.com](http://FloridaBirdingTrail.com)

PHOTOS BY DAVID MOYNAHAN (BIRDERS) AND COURTESY OF HARRY SMITH OUTDOORS (KAYAKING PHOTOS)



**GAME ON!** 

**WELCOMING THE WORLD TO TALLAHASSEE**

On January 10, 2026, the World Athletics Cross Country Championships will take place at Leon County’s award winning Apalachee Regional Park in Tallahassee, marking a historic moment as the community hosts its first world championship sporting event. Athletes and spectators can expect thrilling races and a challenging course featuring entertaining fan-zones and a festive atmosphere.

With a reputation that’s second to none, Apalachee Regional Park is a premier cross-country course that offers a challenging terrain for elite athletes from around the world. This event will not only showcase the world’s top runners but also highlight Tallahassee as the Capital of Cross Country.

The 2026 Championships will bring an international spotlight to Tallahassee, offering an exciting experience for sports enthusiasts and providing a significant boost to the local community. It’s an unmissable event that promises to inspire and unite cross-country fans from all corners of the globe.

[WXCtallahassee26.com](http://WXCtallahassee26.com)



**WORLD ATHLETICS CROSS COUNTRY CHAMPIONSHIPS TALLAHASSEE 26**



**FALL IN TALLAHASSEE CAN ONLY MEAN ONE THING—FOOTBALL**

Home to both the Florida State University Seminoles and the Florida A&M University Rattlers, Tallahassee is a true paradise for football enthusiasts. Saturdays here are all about friends, food, and cherished traditions. Don’t miss the iconic FSU pregame ritual of Osceola and Renegade at Doak Campbell Stadium or the electrifying Marching 100 halftime show at Bragg Memorial Stadium. Whether you’re a die-hard Seminole or Rattler fan or simply here to soak up the electric atmosphere, Tallahassee guarantees an unforgettable college experience.

**GOLF IN TALLAHASSEE**



Whether seasoned or new to the game, golf enthusiasts will find an array of courses in Florida’s Capital City. From the historic Capital City Country Club and the scenic Southwood Golf Club to the 9-hole Jake Gaither Course and public Hilaman Golf Course, there is a perfect course for everyone.

For those looking for a variation on traditional golf, experience the No. 1 ranked Disc Golf Course in Florida at Tom Brown Park! The 24-hole course offers a challenging layout, picturesque fairways and natural obstacles for an unparalleled experience for all ages and skill sets.

PHOTO BY STEVEN SACCIO (CROSS COUNTRY)

# GOODWOOD MUSEUM & GARDENS



## WHERE THE PAST MEETS THE PRESENT

There is always something happening at Goodwood. Tour the 19th-century Main House, practice mindful walks or yoga in the garden, attend a performance, host your own special event, or just wander our wooded paths and heirloom gardens.

Visit [GoodwoodMuseum.org](http://GoodwoodMuseum.org) for seasonal hours and events  
Tours | Gardens | Special Events | Private Rentals

*Goodwood*  
MUSEUM & GARDENS

1600 Miccosukee Road  
(850) 877-4202  
[GoodwoodMuseum.org](http://GoodwoodMuseum.org)



# A Taste of Tallahassee

Blending traditional Southern cuisine and modern dining with fresh, farm-to-table fare and craft breweries, Tallahassee is a true epicurean experience. With flavors as unique as the chefs who create them, satisfy your palate at any of our mouth-watering restaurants or bars.

For a robust sampling of Capital City cuisine, we invite you to feast on some of Tallahassee's most delicious dining from dawn to dark.

## QUINTESSENTIAL TALLAHASSEE

For 40 years, Hopkins' Eatery has been delighting Tallahassee with an array of delicious hot and cold sandwiches, soups, salads, and sweets. A local favorite, don't miss the Ultimate Turkey, Linda Special or Chicken Tetrizzini Salad. Be sure to save room for a slice of their homemade cake or one of their delicious Heath Bars.

**Other Tallahassee Staples:** *Bella Bella Italian, Georgio's, Kool Beanz Café*

## BRADLEY'S COUNTRY STORE

Located 12 miles from downtown beneath a majestic canopy of oak trees and Spanish moss is Bradley's Country Store. A modest building, Bradley's stands today just as it did in 1927. Their trade, plain and simple, is making the best old-fashioned country-smoked fresh sausage, stone-ground grits, and preserves that money can buy.



## TRIED & TRUE TALLAHASSEE

For a burger experience you'll be talking about long after you leave, head over to Midtown Caboose. Here, burgers get a creative twist—think peanut butter and jelly or even a s'mores burger. If you're looking for a dining experience that's as fun as it is delicious, this is your spot!

**Other Casual Restaurants:** *Smitty's Taphouse, Nelson's Burger Bar, Bumpas Local 349*

## PLANTIFUL EATS

Black Radish is a vegetable-focused restaurant known for its hyper-seasonal, shareable vegetable dishes, expertly crafted handmade pastas, and thoughtfully curated selection of natural wines. Embracing a mostly vegetarian and vegan menu, the establishment also offers a selection of large-format meat dishes, inviting guests to savor communal dining experiences with loved ones.

**Other Vegetarian Fare:** *The Social Vegan, The Bark, Sweet Pea Café*



## Il Lusso



DAVE BARFIELD



### FINE DINING

Effortlessly chic and refined, **Il Lusso** overlooks the Chain of Parks in downtown Tallahassee and specializes in handcrafted pasta, exceptional prime steaks, and scratch-made desserts.

**Other Luxurious Dining:** *Savour, Mimi's Table, Lucilla, Food Glorious Food, The Huntsman, Clusters & Hops, The Monroe Blu Halo, Connors Steak & Seafood.*



SAIGE ROBERTS



### FARM TO TABLE

**Backwoods Crossing** takes farm-to-table to the next level by sourcing local fruits, veggies, meats, seafood, and wine from local producers and growing their own! What began as a few raised beds in the front lawn to supply the restaurant with fresh herbs has morphed into a full-fledged 3.5-acre farmette supplying a cornucopia of fresh produce all year round.

Backwoods Crossing

### GET FUNKY

Serving the freshest Gulf oysters, fish and burgers, **Bird's Aphrodisiac Oyster Shack** is a local joint that is not to be missed. Enjoy nightly entertainment and order oysters to your liking—on the half shell, steamed or baked with toppings of your choice.

**Other Off-The-Beaten-Path Favorites:** *Shell Oyster Bar, VeneBites, Kool Beanz Cafe*

### COLLEGE EATS

From the award winning BLT Dip to Hot Totty and the Madison Mule, **Madison Social's** menus feature unique twists on classic pub fare. Located in the heart of CollegeTown, this spot is a must for students, alumni, and anyone that loves great food and good times.

**Other Student Favorites:** *Little Masa, Gordo's, Olean's Cafe, Momo's Pizza*



Madison Social



**TallahasseeFoodies.com**

CURATORS OF CAPITAL CITY CUISINE

Tallahassee Foodies is the essential source for the inside scoop on local restaurants, food trucks, bars, and breweries. This dedicated group of food lovers is an outstanding resource to help you decide where to dine on your next trip to the Capital City.

# Black-Owned Restaurants

Black-owned restaurants are an essential part of Tallahassee cuisine and culture. Whether you're craving Southern-style cooking, fresh seafood or something sweet, Tallahassee has a wide selection of restaurants to satisfy your appetite. And there is no better way to support the local economy than to fill your belly and your soul while doing it.

## BARB'S GOURMET BRITTLES

Discover the sweetest indulgence at Barb's Gourmet Brittles at Lake Ella, a beloved Tallahassee institution for over 20 years. Delight in their delectable brittles, mouthwatering ice cream, and an array of goodies and gifts.

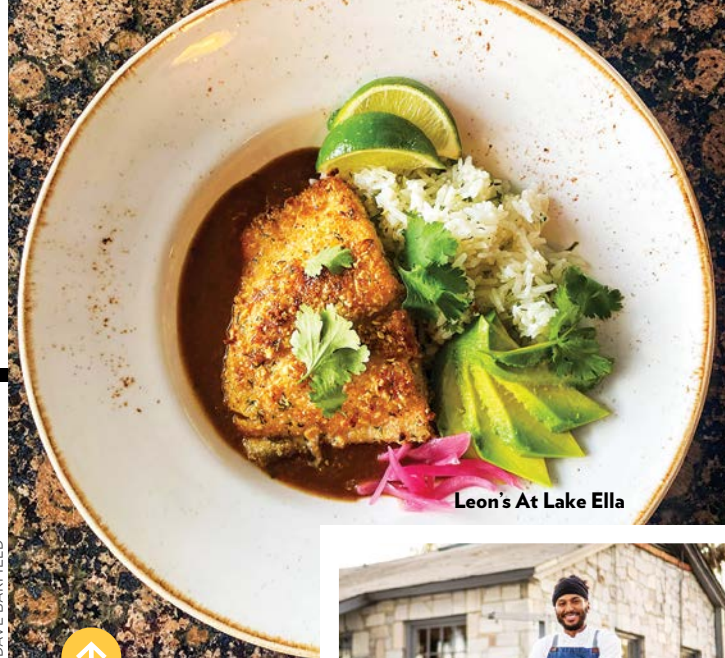


## JOELLEN'S

In Kleman Plaza downtown, JoEllen's offers a menu full of Southern classics and comfort foods like fried chicken and pork chops along with shareable plates and vegan dishes.

## EARLEY'S KITCHEN

A staple of the southside of Tallahassee, Earley's Kitchen has been dishing up good ol' Southern country cooking for breakfast and lunch for over 30 years.



DAVE BARFIELD



## LEON'S AT LAKE ELLA

Located in a quaint 1925 cottage overlooking historic Lake Ella, Leon's offers a cozy dining experience curated by local culinary star, Chef Leon. Known for his innovative dishes and recent appearance on Hulu's *Secret Chef* (2023), this restaurant is a beloved destination for both locals and visitors alike.



## MA'S DINER

Ma's Diner at Bannerman Crossings is a charming spot serving up a hearty breakfast and lunch with a side of generous hospitality. Alongside classic breakfast fare, diners can enjoy BLTs, burgers, and chicken tender sandwiches, with daily specials adding variety to the menu.



## OLEAN'S CAFE

For over 20 years, Olean's Cafe has proudly served Southern cooking from the soul. Located directly across from FAMU's campus, Olean's Cafe has been a staple for Rattlers and Southern food lovers alike, including then-Vice President Joe Biden while out on the campaign trail. If you're looking for soul food with heart, Olean's is the place to go!



For a listing of more Black-owned restaurants, scan the QR code.



## MEDITERRANEAN & WORLD CUISINE

Specializing in locally sourced seafood and prime steaks.

Full bar, outdoor veranda and private banquet rooms.

Locally owned and operated.

Over 55 years of experience serving Tallahassee.

Private dining  
Banquet rooms available



**GEORGIO'S**  
FINE FOOD & SPIRITS

2971 Apalachee Parkway  
(850) 877-3211  
georgiostallahassee@gmail.com  
GeorgiosTallahassee.com



## AUTHENTIC JAPANESE CUISINE

A unique culinary experience that transports you to the heart of Japan. Hibachi, sushi and entrees are expertly crafted by skilled chefs using only the freshest ingredients. Kyoto is locally owned with a full bar. Come and savor the flavors.



3111 Mahan Drive, #15  
(850) 656-9888  
KyotoTally.com

# Food Wars

## INDULGENT

There's no shortage of decadent delights in Tallahassee. Sink your teeth into some of these tasty treats!

### Meat Lovers



**Dry-Aged Duck Breast @ The Huntsman**  
Savor exotic meats and well-crafted cocktails!

### Appetizer



**Bubble Potato @ Black Radish**  
You won't want to share. And that's okay.

YOUR SOCIAL, INC.

### Tacos



**Birria Tacos @ Tacos La Tiendita**  
¡Los tacos de birria son muy buenos!

### Pizza



**Deep Dish Chicago-style Pizza @ Coach's Pizza**  
It's less a pizza and more a delicious life sentence of cheese and sauce.

### Cheesy



**Poutine @ Hayward House**  
Hand-cut fries drowning in gravy and cheese curds? Welcome to the dark side of indulgence.

VS

## LIGHTER FARE

Farm-to-table and artisanal creations are just the beginning. There's never a shortage of fresh and healthy handcrafted cuisine.

### Tropical



**Shrimp Bowl @ Pineappétit**  
Tropical-inspired dishes bring a feeling of paradise.

DAVE BARFIELD

### Sushi



**Trust Me Roll @ Izzy's**  
Trust us! Perfectly crafted, fresh, and delicious.

DAVE BARFIELD

### Vegan



**Bánh Mi @ The Bark**  
Arguably one of Tallahassee's best sandwiches, and it's vegan!

### Bowls



**The Medi Bowl @ Lemon & Thyme**  
Mediterranean-inspired bowl with grains, spinach, falafel crumbles, and more.

### Fresh



**Garden Creation Menu @ Backwoods Crossing**  
Experience the freshest of flavor that rotates seasonally with ingredients grown on-site!



# WORLD-CLASS EXPERIENCES



## EXPLORE TALLAHASSEE

With more than 100 world-class parks to choose from and a variety of districts vibrant with eclectic shopping and dining options, Tallahassee offers unique experiences for all to enjoy. With strong leadership and a dedicated workforce of nearly 4,000 employees, the City of Tallahassee proudly invites visitors and citizens alike to explore, connect and learn what makes Florida's Capital City the best city ever. For more information, visit [Talgov.com](http://Talgov.com).



**CITY OF  
TALLAHASSEE**



**Best Spots to Hit Up the Local Music Scene**

- » THE ADDERLEY AMPHITHEATER
- » THE GETAWAY GRILLE AND BAR
- » HOUSE OF MUSIC
- » FIRE BETTY'S
- » BLUE TAVERN
- » DUKE'S AND DOTTIE'S
- » LEGACY AT THE RIVERFRONT
- » TALLAHASSEE NIGHTS LIVE PERFORMING ARTS CENTER

**Best College Experience**

- » TOWNSHIP
- » MADISON SOCIAL
- » RECESS
- » POTBELLY'S
- » PALACE SALOON
- » BULLWINKLE'S

**Best Wine Bars**

- » HUMMINGBIRD WINE BAR
- » THE WINE HOUSE AT MARKET ST.
- » LA FLORIDA COFFEE & WINE

**Best "Barcade"**

- » HANGAR 38
- » DISTRICT 850
- » PICKLE PAD

**Best Spot for Craft Cocktails**

- » BAR 1903
- » THE MONROE
- » SAGE
- » THE LOUNGE AT MARKET SQUARE
- » BLU HALO
- » LIBERTY

# After Hours

## The Sky's the Limit

AT THESE RADIANT ROOFTOP HOT SPOTS

**Enjoy** artful aperitifs, cool cocktails, and sassy sips complemented with haute hors d'oeuvres. Whether you're looking for an after-dinner drink with your date or a late-night libation with friends, these locations offer exceptional views high above the canopied oaks.

**CHARLIE PARK**

Refined and comfortable, Charlie Park features several indoor lounge areas as well as a stunning terrace with dramatic views of Cascades Park. Grab one of their sophisticated cocktails, a glass of their expertly curated wines and spirits, and a shareable from their small-plates menu. Perched atop the AC Marriot Hotel, this hot spot needs to be on your next trip to Tallahassee.

**LEVEL 8 LOUNGE**

Hotel Duval is home to Level 8, a sophisticated rooftop lounge featuring panoramic views of downtown along with shareable tapas and live music several nights a week.

**EVE ON ADAMS**

In the heart of downtown Tallahassee, this 17th-floor rooftop lounge above the DoubleTree by Hilton is the highest spot to enjoy the view, day or night. Savor exquisite cocktails and live music as you take in expansive views of the capital region in every direction.

PHOTOS BY YOUR SOCIAL, INC. (CHARLIE PARK, DUKE'S AND DOTTIE'S, AND BAR 1903)



Charlie Park



Duke's and Dottie's

## TALLAHASSEE'S MUSIC SCENE



# HITS ALL THE RIGHT NOTES

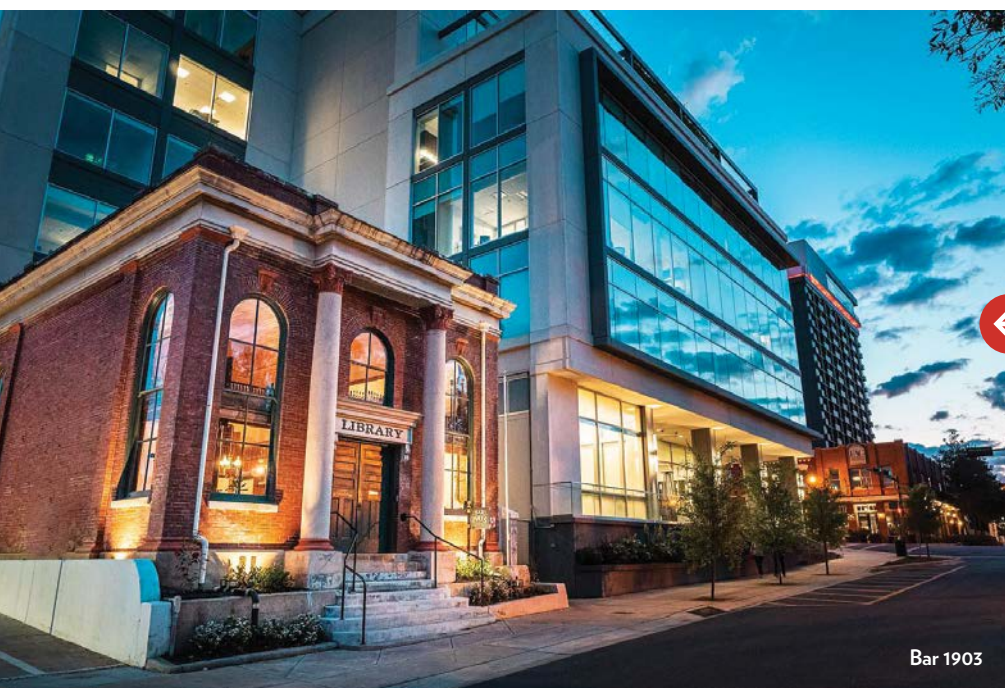
Whether you're into intimate acoustic sets or energetic live concerts, Tallahassee's music scene is perfect for every vibe. **Fire Betty's** in Midtown is a must-visit for a fun night out, combining lively bars with a buzzing stage featuring the best in rock, indie, and alternative music. It's the place to go if you want to feel the energy of the crowd and discover new bands.

For a more laid-back evening, head to **Blue Tavern**—a cozy, bohemian spot where you can enjoy the smooth sounds of jazz, folk, and blues. It's the perfect setting for anyone who loves a soulful, intimate music experience.

**Legacy at the Riverfront** is a picturesque spot to catch touring and local bands in a beautiful setting on the edge of the Ochlockonee River. Bring your friends and family for a relaxing time filled with great tunes and a fun, lively atmosphere.

For the ultimate country bar experience, look no further than **Duke's and Dottie's**. Embrace the Southern spirit as you two-step to weekly line dancing or saddle up for a wild ride on the mechanical bull. Get ready to let loose, enjoy live music and experience a true taste of the South!

For a comprehensive list of music venues throughout Tallahassee, go to: [VisitTallahassee.com/LiveMusic](http://VisitTallahassee.com/LiveMusic).



Bar 1903



## BAR 1903

WHERE HISTORY MEETS HANDCRAFTED COCKTAILS

Nestled within the historic downtown Walker Library, **Bar 1903** honors the history of mixology while pushing the boundaries of the cocktail experience. Explore a cocktail menu spanning 160 years, an extensive spirits list and small plates. Plan to arrive early, as the historic location only allows for 36 seats that are first come, first served.

# GREAT THINGS ARE Brewing IN TALLAHASSEE

**From imperial stouts to fruit-infused sours,** Tallahassee's craft breweries pour ample servings of creativity and quality, and boldly introduce themselves with award-winning style. These taprooms welcome visitors and locals to gather, have a drink, and make new friends!



Proof Brewing Co.

## ICON KEY



Tasting Room



Beer Garden



Food



Pet Friendly



**DEEP  
BREWING**  
[DeepBrewing.com](http://DeepBrewing.com)



MUST TRY:  
**SPEAR PRESSURE**  
Golden Ale, 4.5% ABV



**FOOLS FIRE  
BREWING  
COMPANY**  
[FoolsFire.com](http://FoolsFire.com)



MUST TRY:  
**HOT PURPLE MAGIC**  
Fruited Berliner Weisse, 4.5% ABV



**LAKE TRIBE  
BREWING**  
[LakeTribeBrewing.com](http://LakeTribeBrewing.com)



MUST TRY:  
**BECKSTER'S  
SATSUMA WHEAT**  
American Wheat Ale, 5.5% ABV

## LIVELY BEER GARDENS

### THE HUB AT FEATHER OAKS

[TheHubAtFeatherOaks.com](http://TheHubAtFeatherOaks.com)

The Feather Oaks' Tasting Bar(n), once a horse barn, now offers a unique taproom experience with draft taps of rare regional beers and a vast wine selection.

### GROWLER COUNTRY

[GrowlerCountry.com](http://GrowlerCountry.com)

Florida's first dedicated growler-filling station and rated the Best Beer Bar in Florida in 2018 by CraftBeer.com.

### BRASS TAP

[BrassTapBeerBar.com](http://BrassTapBeerBar.com)

The Brass Tap offers more than 150 craft beers from around the globe in a neighborhood atmosphere that feels both relaxed and upscale.

### TOWNSHIP

[TownshipTLH.com](http://TownshipTLH.com)

An open beer hall with over 70 beers and urban street fare, Township is a contemporary take on a traditional beer garden.

PHOTOS COURTESY OF PROOF BREWING CO., OYSTER CITY BREWING CO., AMICUS BREWING VENTURES, AND DEEP BREWING CO.



**OLOGY  
BREWING CO.**  
[OlogyBrewing.com](http://OlogyBrewing.com)



Three locations: Midtown, Northside (☞) and Powermill

MUST TRY:  
**SENSORY OVERLOAD**  
Hazy Citra IPA, 6.5% ABV



**OYSTER CITY  
BREWING CO.**  
[OysterCityBeer.com](http://OysterCityBeer.com)



MUST TRY:  
**MANGROVE**  
Pale Ale with Mango, 8.2% ABV



**PROOF  
BREWING CO.**  
[ProofBrewingCo.com](http://ProofBrewingCo.com)



Must Try:  
**EIGHTFIVE-0**  
American Pale Ale, 6.5% ABV



**AMICUS  
BREWING  
VENTURES**  
[AmicusBrewingVentures.com](http://AmicusBrewingVentures.com)



MUST TRY:  
**CASCADES PALE ALE**  
American Pale Ale, 5.5% ABV



Oyster City Brewing Co.



Amicus Brewing Ventures



DEEP Brewing Co.

# SPIRITS OF TALLAHASSEE

Tallahassee is quickly becoming a hotspot for craft spirits enthusiasts. With a growing number of local distilleries, the city offers a unique opportunity to taste small-batch, expertly crafted whiskey, vodka, rum, and more. Whether you're a seasoned connoisseur or just curious, you'll find something to love. Visit Tallahassee's distilleries to experience hand-crafted spirits made from locally sourced ingredients, each with its own distinct flavor and story.



## Walls Distilling Company

Walls Distilling Company, the newest addition to Tallahassee distilling scene, offers hand-crafted spirits with a focus on locally sourced ingredients. Opened in 2024, Walls Distilling has released their first vodka and rum with more spirits coming soon. Crafted with precision, smooth and clean, this superior spirit is perfect for sipping or elevating your favorite cocktail. Take a tour of the distillery and then enjoy a premium cocktail in the stylish tasting room to round out a perfect evening.



## Ology Distilling

Tallahassee's first small-batch craft distillery produces fine spirits. From their captivating Golden Rum, aged to perfection in diverse oak casks, to their meticulously fermented single malt whisky, kissed by Florida's tropical climate, each pour tells a tale of artistry. Explore handcrafted gins, velvety vodka, and a world of imaginative liqueurs and cocktails at one of their three Tallahassee tasting rooms.



# Attractions

Fill your days exploring the great outdoors on over 700 miles of trails, enjoying one of our family-friendly attractions, taking a guided tour through our historic sites or immerse yourself in our arts & culture. Use these pages to plan unforgettable experiences.

## EDWARD BALL WAKULLA SPRINGS STATE PARK

[FloridaStateParks.org/Park/Wakulla-Springs](http://FloridaStateParks.org/Park/Wakulla-Springs)

Wakulla Springs is one of the largest and deepest freshwater springs in the world. Daily guided boat tours offer wildlife viewing, including alligators, turtles, manatees, deer, and bird species.

## Outdoors/ Parks

### ALFRED B. MACLAY GARDENS STATE PARK

[FloridaStateParks.org/Park/Maclay-Gardens](http://FloridaStateParks.org/Park/Maclay-Gardens)

One of the area's most photographed sites highlighting flowers, a secret garden, reflection pool, nature trails, and boating on Lake Hall.

### BALD POINT STATE PARK

[FloridaStateParks.org/Park/Bald-Point](http://FloridaStateParks.org/Park/Bald-Point)

Located on Alligator Point, the park offers land and water activities including sunbathing, fishing, swimming, paddling, windsurfing, and a picnic area.

### CANOPY ROADS

[VisitTallahassee.com/Canopy-Roads](http://VisitTallahassee.com/Canopy-Roads)

Scenic drives define the Tallahassee area, especially its

signature canopy roads where the limbs of huge moss-draped live oaks, sweet gums, and hickory trees provide a towering canopy over roads that were once paths traveled by native tribes. Tallahassee has nine official canopy roads offering more than 78 miles of gorgeous drives to experience.

### CASCADES PARK/THE ADDERLEY AMPHITHEATER

[TheAdderleyAmphitheater.com](http://TheAdderleyAmphitheater.com)

This 24-acre downtown park includes Florida's Prime Meridian marker, Capital City "Adderley" Amphitheater, multiuse trails, an interactive water fountain, Discovery playscape, numerous historical markers, and memorials.

### DOROTHY B. OVEN PARK

[TalGov.com/Parks/Centers-Oven](http://TalGov.com/Parks/Centers-Oven)

Park featuring lush gardens with azaleas, camellias, palms, and other local flowers.

### LAKE JACKSON MOUNDS ARCHAEOLOGICAL STATE PARK

[FloridaStateParks.org/Park/Lake-Jackson](http://FloridaStateParks.org/Park/Lake-Jackson)

Native Americans lived at this site 800 years ago and it is now considered one of Florida's most important archaeological sites.

### LAKE TALQUIN STATE PARK

[FloridaStateParks.org](http://FloridaStateParks.org)

Nestled on the bluffs overlooking Lake Talquin's southern shore, the park offers outdoor activities for all ages.

### OCHLOCKONEE RIVER STATE PARK

[FloridaStateParks.org/Park/Ochlockonee-River](http://FloridaStateParks.org/Park/Ochlockonee-River)

This river empties into the Gulf of Mexico and is an excellent spot for freshwater and saltwater fishing. Park amenities include picnic facilities, a swimming area, trails, and wildlife viewing.

### ST. GEORGE ISLAND

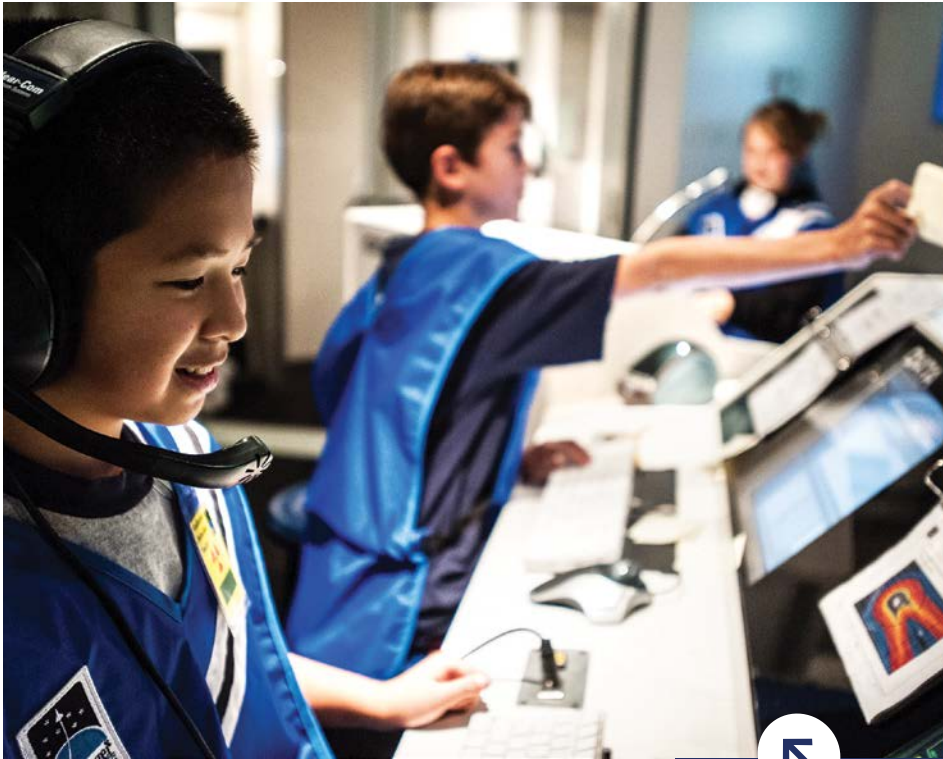
[SeeStGeorgelsland.com](http://SeeStGeorgelsland.com)

Consistently named one of the best beaches in Florida, this 22-mile-long barrier island is noted for sunning, shelling, swimming, and marshes popular for bird and wildlife viewing.

### ST. MARKS NATIONAL WILDLIFE REFUGE & LIGHTHOUSE

[FWS.gov/Refuge/St\\_Marks](http://FWS.gov/Refuge/St_Marks)

Established as a wintering ground for migratory birds, it is one of the oldest refuges in the U.S. The refuge includes coastal marshes, islands, tidal creeks, estuaries of seven North Florida rivers, a historic lighthouse, and is a "gateway site" for the Great Florida Birding Trail.



## Family

### DISTRICT 850

[District850.com](http://District850.com)

Test your agility on a ropes course, challenge your mind (and your friends) in one of three escape rooms, enjoy happy hour and more.

### FLIPPIN' GREAT PINBALL

[FlippinGreat.com](http://FlippinGreat.com)

Play new and vintage pinball machines and arcade games.

### FUN STATION

[ItsFunner.com](http://ItsFunner.com)

The focus is fun at The Fun Station! With go-karts, mini golf, laser tag and the largest video arcade in town.

### GULF SPECIMEN AQUARIUM

[GulfSpecimen.org](http://GulfSpecimen.org)

This popular attraction offers marine biology experiences through interactive touch aquariums, educational displays, and demonstrations.

### HANGAR 38

[TheHangar38.com](http://TheHangar38.com)

Bowling, gaming, drinks and dining—fun for the entire family.

### NATIONAL HIGH MAGNETIC FIELD LABORATORY AT FSU

[NationalMagLab.org](http://NationalMagLab.org)

The only facility of its kind in the United States, the “Mag Lab” is the largest and most powerful magnet laboratory in the world. Public tours take place the third Wednesday of every month.

### NORTH FLORIDA WILDLIFE CENTER

[NorthFloridaWildlife.org](http://NorthFloridaWildlife.org)

Public tours and animal encounters with adorable black and white ruffed lemurs, red kangaroos, or wallaby joeys.

### TALLAHASSEE AUTOMOBILE MUSEUM

[TACM.com](http://TACM.com)

This museum features over 150 rare vehicles—including three Batmobiles, the horse-drawn funeral hearse that carried Abraham Lincoln and other Americana collections.

### CHALLENGER LEARNING CENTER/ IMAX THEATER AND PLANETARIUM

[ChallengerTLH.com](http://ChallengerTLH.com)

Features a state-of-the-art space mission simulator and space station laboratory, a 50-foot dome planetarium and the region's largest IMAX® 3D Theater.

### TALLAHASSEE MUSEUM

[TallahasseeMuseum.org](http://TallahasseeMuseum.org)

This 52-acre natural history museum features native habitats showcasing indigenous Florida wildlife including the endangered Florida panther. The museum also has an outdoor zip-line adventure course, artistic dinosaurs made from reclaimed auto parts, historic pioneer buildings, educational exhibits, classrooms, a cafe, gift shop, and playground.

# 10 free activities in Tallahassee

- 1 **BLACK ARCHIVES RESEARCH CENTER & MUSEUM**  
[FAMU.edu/BlackArchives](http://FAMU.edu/BlackArchives)
- 2 **FLORIDA HISTORIC CAPITOL MUSEUM & FLORIDA CAPITOL**  
[FLHistoricCapitol.gov](http://FLHistoricCapitol.gov)  
[FloridaCapitol.MyFlorida.com](http://FloridaCapitol.MyFlorida.com)
- 3 **ST. MARKS TRAIL**  
[Tallahassee.com](http://Tallahassee.com)
- 4 **LAFAYETTE HERITAGE TRAIL**  
[Tallahassee.com](http://Tallahassee.com)
- 5 **TOM BROWN PARK**  
[TalGov.com/Parks/Parks-TomBrown](http://TalGov.com/Parks/Parks-TomBrown)
- 6 **TALLAHASSEE-LEON COUNTY CIVIL RIGHTS SIDEWALK**  
[VisitTallahassee.com](http://VisitTallahassee.com)
- 7 **THE GROVE MUSEUM**  
[TheGroveMuseum.com](http://TheGroveMuseum.com)
- 8 **BRADLEY'S COUNTRY STORE**  
[BradleysCountryStore.com](http://BradleysCountryStore.com)
- 9 **CASCADES PARK**  
[TheAdderleyAmphitheater.com](http://TheAdderleyAmphitheater.com)  
[DiscoverCascades.com](http://DiscoverCascades.com)
- 10 **SKATE THE SNAKE**  
[Cascades Trail](http://CascadesTrail)  
[Skateable Art Park](http://SkateableArtPark)





**FLORIDA HISTORIC  
CAPITOL MUSEUM**

[FLHistoricCapitol.gov](http://FLHistoricCapitol.gov)

Restored to its 1902 grandeur the Historic Capitol stands as an icon at the front of Florida's Capitol Complex.

**JAKE GAITHER  
MEMORIAL HOUSE**

[JakeGaitherHouse.org](http://JakeGaitherHouse.org)

The former home of legendary Florida A&M University football coach Jake Gaither is now a museum listed on the National Register of Historic Places.

**JOHN G. RILEY  
CENTER & MUSEUM**

[RileyMuseum.org](http://RileyMuseum.org)

Built in 1890 by John G. Riley, local educator and civic leader, the home is the last visible evidence of Smokey Hollow, an African American community in downtown Tallahassee.

# History

**APALACHICOLA HISTORIC  
DOWNTOWN**

[HistoricApalachicola.com](http://HistoricApalachicola.com)

Quaint town offering shops, restaurants, a brewery and Maritime Museum.

**BLACK ARCHIVES  
RESEARCH CENTER  
& MUSEUM**

[FAMU.edu/BlackArchives](http://FAMU.edu/BlackArchives)

Housed within the first Carnegie Library built on a Black land-grant college campus, the Meek-Eaton Black Archives has one of the most extensive collections of African American artifacts in the Southeast.

**BRADLEY'S  
COUNTRY STORE**

[BradleysCountryStore.com](http://BradleysCountryStore.com)

This family-owned store has operated at the same location since 1927 and is famous for its homemade sausage and country milled grits

**CAMP GORDON JOHNSTON  
WORLD WAR II MUSEUM**

[CampGordonJohnston.com](http://CampGordonJohnston.com)

Located in nearby Carrabelle, the camp served as an amphibious training base for nearly 30,000 soldiers between 1941 and 1946.

**FLORIDA CAPITOL  
COMPLEX**

[FloridaCapitol.MyFlorida.com](http://FloridaCapitol.MyFlorida.com)

The Capitol Complex consists of the 22-story Capitol building, the House of Representatives and

Senate Chambers, the Historic Capitol and the Knott Building.

**GOVERNOR'S MANSION**

[FloridaGovernorsMansion.com](http://FloridaGovernorsMansion.com)

The mansion's Greek Revival architectural style and the central portico were designed to resemble Andrew Jackson's home, "The Hermitage." The current mansion is home to Florida's governor and the first family.

**HERNANDO DE SOTO STATE  
ARCHAEOLOGICAL SITE**

[AmericanHeritage.com/Content/Hernando-de-Soto-State-Archaeological-Site](http://AmericanHeritage.com/Content/Hernando-de-Soto-State-Archaeological-Site)

Believed to be the site of the first Christmas celebrated in North America in 1539 by Spanish conquistador Hernando de Soto and his expedition.



**GOODWOOD  
MUSEUM AND  
GARDENS**

[GoodwoodMuseum.org](http://GoodwoodMuseum.org)

A beautifully preserved antebellum estate featuring historic architecture, lush gardens, and engaging exhibits, offering a glimpse into 19th-century life and culture.



**ACCESSIBLE TALLHASSEE** Enjoy your trip with attraction accessibility information verified by Wheel the World.







### THE GROVE

*TheGroveMuseum.com*  
The Call-Collins House at The Grove is one of the best-preserved examples of Greek Revival architecture in Florida.



### NATURAL BRIDGE BATTLEFIELD STATE HISTORIC SITE

*FloridaStateParks.org/Park/Natural-Bridge*

Site of the March 1865 Civil War battle where Confederate soldiers defeated Union troops and kept Tallahassee from Union control.

### PARK AVENUE HISTORIC DISTRICT

*TalTrust.org*

The city's oldest continuous green space, the chain of seven parks encompasses historic homes and a historic cemetery.

### PEBBLE HILL PLANTATION

*PebbleHill.com*

The plantation served as land for cotton, rice, and tobacco farming, a sport shooting location, and raising prize-winning Jersey cows.

### SAN MARCOS DE APALACHE HISTORIC PARK

*FloridaStateParks.org/Park/San-Marcos*

Located at the confluence of the St. Marks and Wakulla rivers,



### CIVIL RIGHTS MEMORIAL AT CASCADES HISTORICAL PLAZA

*VisitTallahassee.com/CivilRights*

The display commemorates the civil rights activism that took place in Tallahassee and sits on the former site of the Leon County Jail.



this site was used by succeeding nations that once controlled the area, including the Spanish, British and the Confederacy.

### SOUL VOICES OF FRENCHTOWN

*RileyMuseum.org*

A walking tour through the historic Frenchtown neighborhood featuring 13 monuments, many with audio messages, highlighting the people and events that helped shape civil rights in Tallahassee.

### SPRING HOUSE

*PreserveSpringHouse.org*

Built in 1954, this is the only Frank Lloyd Wright-designed private residence in Florida and is on the National Register of Historic Places.

today the home serves as a museum of African American history, culture and civil rights.

### THOMASVILLE HISTORIC DOWNTOWN

*ThomasvilleGA.com*

The "City of Roses" is known for plantation homes and historic downtown featuring brick-paved streets lined with antique shops, boutiques and restaurants.

### UNION BANK MUSEUM

*TheBlackArchives.com/Union-Bank*

Florida's oldest surviving bank building that reopened after the Civil War as the Freedom Savings and Trust Company for emancipated slaves.

### TALLAHASSEE-LEON COUNTY CIVIL RIGHTS HERITAGE WALK

*120 E. Jefferson St.*

Sidewalk with 16 terrazzo panels of local civil rights leaders and other activists who participated in civil rights protests.

### TAYLOR HOUSE MUSEUM OF HISTORIC FRENCHTOWN

*TallahasseeUrbanLeague.org*

Built in 1894 by Lewis W. Taylor,



### MISSION SAN LUIS

*MissionSanLuis.org*

The 63-acre site is a living-history museum and national historic landmark of the only reconstructed 17th-century Spanish mission in Florida.



# Arts

## 621 GALLERY

[621Gallery.org](http://621Gallery.org)

The 621 Gallery provides contemporary art, artists and ideas to Tallahassee, North Florida and South Georgia regions.

## ANDERSON BRICKLER GALLERY

[AndersonBricklerGallery.com](http://AndersonBricklerGallery.com)

A space for art in south Tallahassee featuring modern, post-war and contemporary artists with a focus on African diasporan artists.

## ARTIST SERIES OF TALLAHASSEE

[TheArtistSeries.org](http://TheArtistSeries.org)

Annual public concerts featuring national and international musicians. All performances are held at FSU's Opperman Music Hall.

## FAMU ESSENTIAL THEATRE

[FAMU.edu/EssentialTheatre](http://FAMU.edu/EssentialTheatre)

Presenting an annual season of works ranging from classical to contemporary productions, with an emphasis on African American culture.

## FAMU FOSTER TANNER FINE ARTS GALLERY

[CSSAH.FAMU.edu](http://CSSAH.FAMU.edu)

Foster Tanner is a teaching gallery featuring art exhibitions and public programming during the academic year and beyond.

## FSU MUSEUM OF FINE ARTS

[MOFA.FSU.edu](http://MOFA.FSU.edu)

Contemporary and traditional works of art with all media represented in changing exhibitions each season.

## FSU SCHOOL OF THEATRE

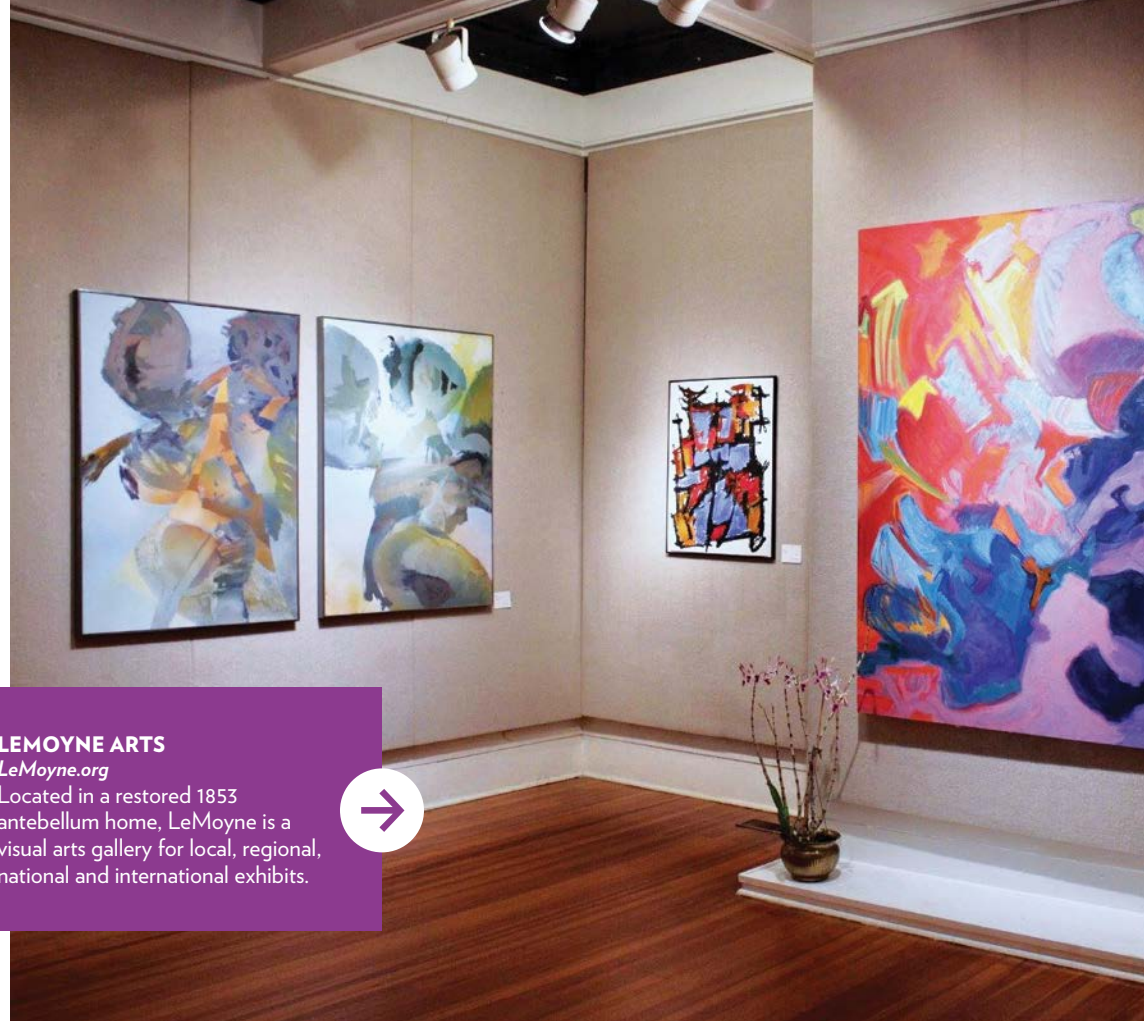
[Theatre.FSU.edu](http://Theatre.FSU.edu)

Award-winning division of the FSU College of Fine Arts, offers annual full-scale theater productions featuring student artists.

## GADSDEN ARTS CENTER & MUSEUM

[GadsdenArts.org](http://GadsdenArts.org)

Nationally accredited arts center and museum offering



## LEMOYNE ARTS

[LeMoynes.org](http://LeMoynes.org)

Located in a restored 1853 antebellum home, LeMoynes is a visual arts gallery for local, regional, national and international exhibits.



## MICKEE FAUST CLUB FOR THE REALLY DRAMATIC ARTS

[MickeyFaust.com](http://MickeyFaust.com)

Bringing the highest form of low brow queer and political humor to various locations throughout the Capital City.



a broad range of interpretive and studio art programs and a calendar of regional, national and historically important art exhibitions.

## MONTICELLO OPERA HOUSE

[MonticelloOperaHouse.org](http://MonticelloOperaHouse.org)

One of the oldest surviving performance venues in the state, the Monticello Opera House is one of the premier historic structures in the region.

## PALAVAR TREE THEATER

[PalaverTreeTheater.org](http://PalaverTreeTheater.org)

Located in Crawfordville, Palaver Tree Theater is Wakulla's premier theater, offering performance and event space and a rental hall.

## PAS DE VIE BALLET COMPANY

[PasDeVieBallet.com](http://PasDeVieBallet.com)

A semi-professional ballet company dedicated to the preservation of the art of dance.

## RAILROAD SQUARE ART DISTRICT

[RailroadSquare.com](http://RailroadSquare.com)

Railroad Square Art District, a creative haven for artists and entrepreneurs, serves as Tallahassee's "Art District." This historic industrial park is home to over 70 artist studios, galleries and locally owned businesses.

## TALLAHASSEE BACH PARLEY

[TallahasseeBachParley.org](http://TallahasseeBachParley.org)

Experienced musicians perform music of the Baroque era (1600-1750) using period instruments.





**TALLAHASSEE SYMPHONY ORCHESTRA**  
[TallahasseeSymphony.org](http://TallahasseeSymphony.org)  
 One of the country's finest regional orchestras offering classical, holiday and family concerts as well as innovative Tallahassee Symphony Orchestra Jazz performances.

**TALLAHASSEE BALLET**

[TallahasseeBallet.org](http://TallahasseeBallet.org)  
 The Tallahassee Ballet is a regional, semi-professional company featuring classical and contemporary works.

**TALLAHASSEE CIVIC CHORALE**

[CivicChorale.org](http://CivicChorale.org)  
 The Tallahassee Civic Chorale consists of local singers with performances throughout the year.

**TALLAHASSEE COMMUNITY CHORUS**

[TCCChorus.org](http://TCCChorus.org)  
 With singers ranging from high school students through senior citizens, the chorus focuses on the performance of large masterworks with orchestra.

**TALLAHASSEE IRISH REPERTORY THEATER**

[TallahasseeIrishRep.com](http://TallahasseeIrishRep.com)  
 The Irish Repertory Theater provides opportunities to experience the cultural legacy of Ireland through theater and festival events.

**TALLAHASSEE HISPANIC THEATER**

[TallahasseeHispanicTheater.wordpress.com](http://TallahasseeHispanicTheater.wordpress.com)  
 The Tallahassee Hispanic Theater is the home of contemporary Hispanic theater productions in Tallahassee.

**TALLAHASSEE YOUTH ORCHESTRAS**

[TallahasseeYouthOrchestras.com](http://TallahasseeYouthOrchestras.com)  
 The Tallahassee Youth Orchestras is the premier

orchestral training program of Florida's Big Bend area.

**THEATRE TALLAHASSEE**

[TheatreTallahassee.org](http://TheatreTallahassee.org)  
 Founded in 1949, Theatre Tallahassee offers eight annual productions across two different stages.

**THEATRE TSC!**

[TSC.FL.edu/Student-Life/Arts-and-Culture/Theatre-TSC](http://TSC.FL.edu/Student-Life/Arts-and-Culture/Theatre-TSC)  
 Student performances as part of TCC's Fine and Performing Arts Center. Season includes two mainstream productions and a student showcase.

**VENVI ART GALLERY**

[VenviArtGallery.com](http://VenviArtGallery.com)  
 Owned and operated by artist Brinda Pamulapati, the gallery showcases local talent and presents works of upcoming and master artists.

**YOUNG ACTORS THEATRE**

[YoungActorsTheatre.com](http://YoungActorsTheatre.com)  
 Independent youth theater program, celebrating nearly 50 consecutive years of training and productions.

**ART EVENTS CALENDAR**



**COUNCIL ON CULTURE & ARTS (COCA)**

914 Railroad Ave., (850) 224-2500, [TallahasseeArts.org](http://TallahasseeArts.org)  
 The Council on Culture & Arts is the local arts agency for Tallahassee and Leon County. Visit COCA's website to see a comprehensive calendar of local arts and cultural events, including a complete listing and map of outdoor public art to explore.



**ACCESSIBLE TALLAHASSEE**

Enjoy your trip with attraction accessibility information verified by Wheel the World.



**TALLAHASSEE TOURS:**

**Sightseeing from a Different View**


*Seeing Tallahassee sights has never been easier or more fun!*

**GUIDED TOURS IN FLORIDA'S CAPITAL AND THE FORGOTTEN COAST**  
[ToursInTallahassee.com](http://ToursInTallahassee.com)

**CAPITAL CITY PEDICABS**  
[CapitalCityPedicabs.com](http://CapitalCityPedicabs.com)

**STORIED PATHS—TALLAHASSEE WALKING TOURS**  
[Storied-Paths.com](http://Storied-Paths.com)

**SOUTHERN AIRBOAT CHARTERS AND TOURS**  
 (850) 614-0332

OFFICE OF  
**ECONOMIC  
 VITALITY**   
 TALLAHASSEE-LEON COUNTY

# Doing Business in Tallahassee

*In Tallahassee, where college town meets cultural center,* politics meets performing arts, and history meets nature—fostering creativity and innovation is how we do business. Tallahassee’s dynamic and supportive business ecosystem attracts entrepreneurs and investors alike, from global corporations like Amazon, Philips, and Danfoss to homegrown startups like DivvyUp and Elite Business Strategies. Tallahassee’s thriving economic climate is complemented by an array of programs and resources designed specifically for businesses of all sizes and industries to thrive. Florida’s Capital is a great place for economic prosperity, from the streamlined tax structure to the affordable cost of doing business.

Tallahassee, Leon County, and the State of Florida have many resources to help companies start or relocate to our community. The **Tallahassee-Leon County Office of Economic Vitality (OEV)** can help your business navigate financial and workforce needs, determine incentive eligibility, and access training, staffing, and research funding. To find out if your business qualifies for any of the incentives, contact OEV Director Keith Bowers at [KBowers@OEVforBusiness.org](mailto:KBowers@OEVforBusiness.org), or visit [OEVforBusiness.org](http://OEVforBusiness.org).

*Tallahassee Metropolitan Statistical Area (MSA)  
was named the **STRONGEST ECONOMY IN THE U.S.**  
in 2023 when compared to 383 MSAs in the Nation.*



#### **TALENT IS OUR NO. 1 COMMODITY**

Tallahassee is home to several esteemed educational institutions, including Florida State University and Florida A&M University. These universities attract a talented pool of graduates, providing the local workforce with diverse skills and expertise. OEV and its workforce and education partners prioritize the talent pipeline with an array of workforce development programs and partnerships. Whether your company is looking to locate or expand, the community is ready to assist you with recruitment, training, and retention strategies.

#### **EMERGING FOREIGN TRADE ZONE**

Another factor contributing to Tallahassee's business-friendly climate is the city's commitment to infrastructure development. The City of Tallahassee and Leon County governments have invested in improving transportation networks, including roadways and airport facilities, to enhance the movement of goods and people. This emphasis on infrastructure ensures businesses in Tallahassee have the necessary connectivity to national and international markets.

One exciting development is the Tallahassee International Airport will soon be home to a fully operational Foreign Trade Zone with U.S. Customs and Border Protection oversight, serving 11 surrounding counties from Interstate 75 to Port St. Joe, FL. The new zone will encourage international commerce, stimulate the economy, and bolster the Northwest and North Central Florida Regions' global market competitiveness.



#### **RESEARCH & DEVELOPMENT HUB**

The research conducted in Florida's Capital City is not just theoretical—it's driving products to market and advancing high-demand industries like alternative energy, Magnetic Resonance Imaging (MRI), and lithium-ion battery development.

Our community benefits from a high concentration of the world's leading research institutions, including the National High Magnetic Field Laboratory (MagLab), the FSU High-Performance Materials Institute, and the Center for Advanced Power Systems. These organizations attract world-class researchers in aerodynamics, power electronics, and magnetic technologies. Complementing our unique research assets are business incubators and accelerators like IGNITE Tallahassee and Domi Station.

# DELIGHT IN AN ARTFUL EXPERIENCE



## LEMOYNE ARTS

Visit LeMoyne Arts in Tallahassee’s Downtown Historic District, and experience our fine art gallery, beautiful sculpture gardens and a gallery shop offering giftable works by local artists. Enjoy our wide variety of cultural events, including the nationally recognized Chain of Parks Art Festival held each April.



ChainofParks.com



125 N. Gadsden St.  
(850) 222-8800  
LeMoyne.org

# Tallahassee Downtown



Whatever the occasion,  
Downtown has something  
to offer for every person.

## 1 AC MARIOTT

801 S. Gadsden St.  
(850) 392-7700  
[marriott.com](http://marriott.com)

## 2 ALOFT

200 N. Monroe St.  
(850) 513-0313  
[marriott.com](http://marriott.com)

## 3 AMICUS BREWING

717 S. Gadsden St.  
(850) 772-0228  
[amicusbrewingventures.com](http://amicusbrewingventures.com)

## 4 ARGONAUT COFFEE

850 S. Gadsden St., Ste. 160  
[argonautcoffee.com](http://argonautcoffee.com)

## 5 AU PECHE MIGNON FRENCH PASTRY SHOP

220 N. Duval St.  
(850) 668-5533  
[frenchpastrytallahassee.com](http://frenchpastrytallahassee.com)

## 6 BAR 1903

209 E. Park Ave.  
(850) 354-9739  
[bar1903tlh.com](http://bar1903tlh.com)

## 7 BUMBLEBEE SKINCARE

359 N. Monroe St.  
(850) 631-1868  
[bumblebeeskincares.com](http://bumblebeeskincares.com)

## 8 CHALLENGER LEARNING CENTER

200 S. Duval St.  
(850) 645-7827  
[challengertlh.com](http://challengertlh.com)

## 9 CHARLIE PARK

801 S. Gadsden St.  
(850) 759-4300  
[charlieparkrooftop.com](http://charlieparkrooftop.com)

## 10 CHUCK'S FISH HOUSE

224 E. College Ave.  
(850) 597-7506  
[chucksfish.com](http://chucksfish.com)

## 11 COMMON GROUND BOOKS

128 N. Bronough St.  
(850) 999-1386  
[cgbookstlh.com](http://cgbookstlh.com)

## 12 DOUBLETREE

101 S. Adams St.  
(850) 224-5000  
[hilton.com](http://hilton.com)

## 13 EARLEY'S KITCHEN AT THE CAPITOL

400 S. Monroe St.  
[earleyskitchen.com](http://earleyskitchen.com)

## 14 THE EDISON

470 Suwannee St.  
(850) 765-9771  
[edisonally.com](http://edisonally.com)

## 15 THE EGG CAFE & EATERY

300 S. Duval St.  
(850) 907-3447  
On Facebook  
@ Egg Cafe Eatery

## 16 ELINOR DOYLE

324 N. Monroe St.  
(850) 222-1298  
[elinordoyleflorist.com](http://elinordoyleflorist.com)

## 17 EVE ON ADAMS

101 S. Adams St.  
(850) 521-6018  
[eoatally.com](http://eoatally.com)

## 18 FOUR POINTS

316 W. Tennessee St.  
(850) 422-0071  
[marriott.com](http://marriott.com)

## 19 GOODIES EATERY

116 E. College Ave.  
(850) 681-3888  
[goodieseatery.com](http://goodieseatery.com)

## 20 GOVERNORS CLUB

202 S. Adams St.  
(850) 224-0650  
[govclub.com](http://govclub.com)

## 21 GOVERNORS INN

209 S. Adams St.  
(850) 681-6855  
[govintallahassee.com](http://govintallahassee.com)

## 22 HARRY'S SEAFOOD BAR & GRILLE

301 S. Bronough St.  
(850) 222-3976  
[hookedonharrys.com](http://hookedonharrys.com)

## 23 HAYWARD HOUSE

228 S. Adams St.  
(850) 825-7081  
[haywardhousetlh.com](http://haywardhousetlh.com)

## 24 HOTEL DUVAL

415 N. Monroe St.  
(850) 224-6000  
[hotelduval.com](http://hotelduval.com)

## 25 THE HUNTSMAN

320 E. Tennessee St.  
(850) 765-1887  
[huntsmantallahassee.com](http://huntsmantallahassee.com)

## 26 IL LUSSO

201 E. Park Ave., #100  
(850) 765-8620  
[illussotally.com](http://illussotally.com)

## 27 JOELLEN'S

215 W. College Ave., #10  
(850) 999-1779  
[joellens.com](http://joellens.com)

## 28 LEMOYNE ARTS

125 N. Gadsden St.  
(850) 222-8800  
[lemoyne.org](http://lemoyne.org)

## 29 NIC'S TOGGERY

212 S. Monroe St.  
(850) 222-0687  
[nicstoggery.com](http://nicstoggery.com)

## 30 LA FLORIDA COFFEE & WINE

350 S. Duval St.  
(850) 938-7745  
[lafloridacoffeewine.com](http://lafloridacoffeewine.com)

## 31 METRO DELI

104 S. Monroe St.  
(850) 224-6870  
[metrodelitaly.com](http://metrodelitaly.com)

## 32 POWER PLANT CAFE

470 Suwannee St.  
(850) 536-6821  
[edisontally.com/cafe](http://edisontally.com/cafe)

## 33 SAVOUR

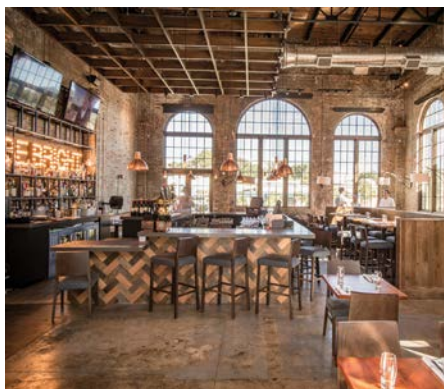
115 E. Park Ave.  
(850) 765-6966  
[savourtallahassee.com](http://savourtallahassee.com)

## 34 ST. JOHN'S LIVELY CAFE

211 N. Monroe St.  
(850) 222-2636  
[saint-john.org/about/the-lively-cafe](http://saint-john.org/about/the-lively-cafe)

● Featured Advertisers

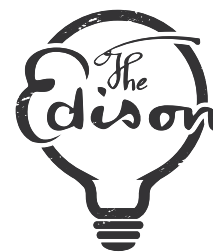
# ILLUMINATE YOUR DINING EXPERIENCE



## THE EDISON TALLAHASSEE

Located in the heart of Tallahassee's most popular outdoor attraction, Cascades Park, The Edison is the city's premier choice for corporate meetings, luncheons and special events. From the internationally inspired cuisine to the beautiful brick building boasting Old-World charm with contemporary fixtures, you and your guests are sure to experience something stunning at every turn.

Banquet Hall | Covered Outdoor Deck | Outdoor Balcony  
Main Dining Room | Beer Garden | Outdoor Terrace



470 Suwannee St.  
(850) 765-9771  
Contact us at  
Events@EdisonTally.com  
[EdisonTally.com](http://EdisonTally.com)



# Year-round free events in Downtown



## DOWNTOWN MARKET

- ▶ Saturdays, 10 a.m.–2 p.m., March–November, Ponce De Leon Park across from the DoubleTree Hotel
- ▶ Handmade gifts, local art and live music
- ▶ Seasonal produce, fresh-baked goods and tupelo honey
- ▶ Live music

Find out more on Instagram @tlhdowntownmarket.



## DOWNTOWN CONCERT SERIES

- ▶ One Saturday a month, May–August, 7–10 p.m., Adderley Amphitheater at Cascades Park
- ▶ Variety of musicians and genres — something for every taste, every time!
- ▶ Food trucks and local vendors on-site, attendees can BYOBeverages, blankets and buddies

Check out X for more information @tlhdowntown.



## DOWNTOWN YOGA

- ▶ Thursdays, 6–7 p.m., Kleman Plaza, May–January
- ▶ All ability levels
- ▶ Bring your own mat and water bottle
- ▶ Variety of talented instructors

Learn more on our Facebook page at @Tallahassee Downtown.



## DOWNTOWN GETDOWN

- ▶ Select Friday nights before home college football games
- ▶ Food trucks and local vendors on-site
- ▶ Live music by talented local bands

Get more details about the next one on our website tlhdowntown.com.



## SOUNDS OF DOWNTOWN

- ▶ Free music crawl with good food, good music and good vibes
- ▶ Featuring talented local bands at your favorite downtown spots throughout the year
- ▶ Flexible schedule where you can choose what bands to go see

Check in for dates on our Facebook page at @Tallahassee Downtown.



## MOVIES IN THE PARK

- ▶ The second Wednesday of the month at sunset in Kleman Plaza
- ▶ Variety of film genres
- ▶ Online ordering and delivery from our restaurant partners so you can have a picnic while watching the movies

Learn more on our Instagram page at @tlhdowntown

PHOTOS BY ERICH MARTIN (DOWNTOWN CONCERT SERIES AND DOWNTOWN GETDOWN), KISER PHOTOGRAPHY (SOUNDS OF DOWNTOWN), AND ALEXIS BONDI (MOVIES IN THE PARK)



# HAYWARD HOUSE



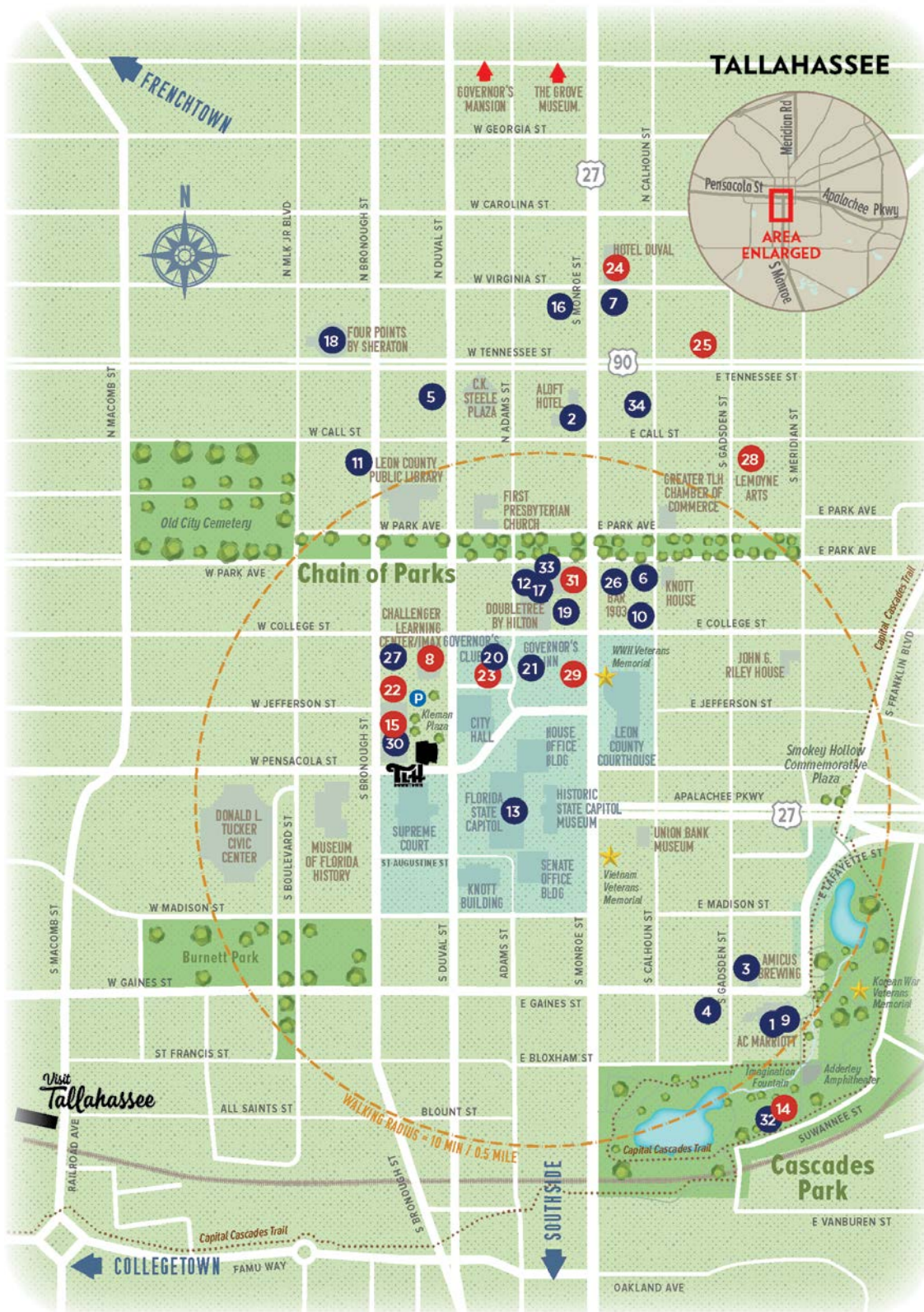
## WHERE HISTORY MEETS MODERN ELEGANCE

In the heart of downtown Tallahassee, you'll find Hayward House - a unique mix of fresh ingredients, modern tastes and cherished memories. Each dish at Hayward House has a story to tell. Drawing from memorable family meals and global travels you will find heart and soul sprinkled throughout the menu. The inviting dining room is ideal for an evening with a loved one or large party celebration. The private dining room can comfortably accommodate up to 60 guests.

**HAYWARD HOUSE**  
*American Bistro*

228 S. Adams St.  
(850) 825-7081  
@haywardhousetlh  
info@haywardhousetlh.com  
**HaywardHouseTLH.com**

# GET AROUND TALLAHASSEE DOWNTOWN



**THE DOWNTOWN TALLAHASSEE HERITAGE TRAIL** is the first in a series of Heritage Trails. Explore [VisitTallahassee.com/HeritageTrails](http://VisitTallahassee.com/HeritageTrails) for more information.

Stops along the way include 13 historically significant sites in downtown Tallahassee, from the **Florida Historic Capitol Museum** to the **Civil Rights Heritage Walk**, which commemorates more than 50 foot soldiers. You can learn about history at the **Union Bank Museum**, enjoy beautiful scenery at **Cascades Park**, take a brief walk to **Smokey Hollow Historic District**, and then stroll up the street to the **John G. Riley Center and Museum**. From there, visit the "House that Rhymes," where the Emancipation Proclamation was first read at the **Knott House**. You can cool off with a drink at the historic **Bar 1903**. Continue down the **Chain of Parks** while viewing **First Presbyterian Church**, which was constructed in 1838, then to the **Old City Cemetery** — a final resting place for men and women who contributed to the development of Tallahassee and the state of Florida.

Additional sites to visit include the **Soul Voices: Frenchtown Heritage Trail** and the **Grove Museum** near the Governor's Mansion.

The Heritage Trail was developed in partnership with Leon County, the Tallahassee Downtown Improvement Authority, John G. Riley House Museum, City of Tallahassee, Florida Department of State, the Tallahassee Historical Society, and local community leaders.



● Featured Advertisers



# LEGENDARY. SOPHISTICATED. UNIQUELY YOURS.



## EXACTLY LIKE NOTHING ELSE

Situated just over a mile from Florida's Capitol, Hotel Duval is a landmark known for its prominent role in Tallahassee's political and social scenes. With contemporary décor and a refined ambiance, it's the ideal spot for those looking to make an impression in the capital city. Hotel Duval is also renowned as a premier destination for culinary and cocktail experiences, featuring the popular rooftop lounge Level 8, LeRoc Bistro, and Shula's 347 Grill. As part of Marriott's Autograph Collection, Hotel Duval is a proud participant in the Marriott Bonvoy program.



**HOTEL  
DUVAL**

AUTOGRAPH  
COLLECTION®

415 N. Monroe St.  
(850) 224-6000  
HotelDuval.com



# ESQUIRE'S TOP 100



## CLOTHES FOR THE MODERN MAN

Nic's Toggery's personal service and timeless style have been passed down through generations for 70 years. We aim to help every man find his unique modern style.

Featuring:

Canali | Jack Victor | Peter Millar | & more

ESTD **N** 1950  
**NIC'S TOGGERY**

Downtown (850) 222-0687  
 The Gallery (850) 893-9599  
 Big & Tall (850) 385-6866  
 NicsToggery.com



## LET THE GOOD TIMES ROLL!

Cajun and Southern flavors with a modern twist. Happy hour 2-7 pm every day and all day Tuesday. Seafood, steak, chicken, handhelds and more. Outdoor covered patio overlooking scenic Downtown.



301 S. Bronough St.  
 (Downtown, at Kleman Plaza)  
 (850) 222-3976  
[HookedOnHarrys.com](http://HookedOnHarrys.com)



## A PRIVATE OASIS

Perfect for long weekends or a long term stay, The Urban Mansion has ample amenities to suit your needs. This historic home is a private oasis in the heart of downtown Tallahassee.

- 3 King Beds
- 6 Twin Beds
- 1 Double Bed
- 4 Bathrooms

## The Urban Mansion

621 N. Calhoun St.  
 (850) 545-9909  
 (850) 528-1693  
[TheUrbanMansion.net](http://TheUrbanMansion.net)



## NOW OPEN ON SATURDAYS

Deli sandwiches, box lunches, salads, soups & more! Catering available! Free Wi-Fi. Fresh baked cookies. We serve breakfast and we deliver! Online ordering available.

Mon-Fri 7:30 am-3:30 pm  
Sat 11 am-4 pm



104 1/2 S. Monroe St.  
(850) 224-6870  
MetroDeliTally.com



## BREAKFAST BRUNCH & LUNCH

Great Food | Great Friends  
Warm & Inviting Atmosphere  
Upscale Tastes at Affordable Prices



3740 Austin Davis Ave.  
The Evening Rose  
(850) 765-0703  
Tues-Sun | 7 am-2 pm

300 S. Duval St.  
Kleman Plaza  
(850) 907-3447  
Tues-Sun | 8 am-2 pm





25



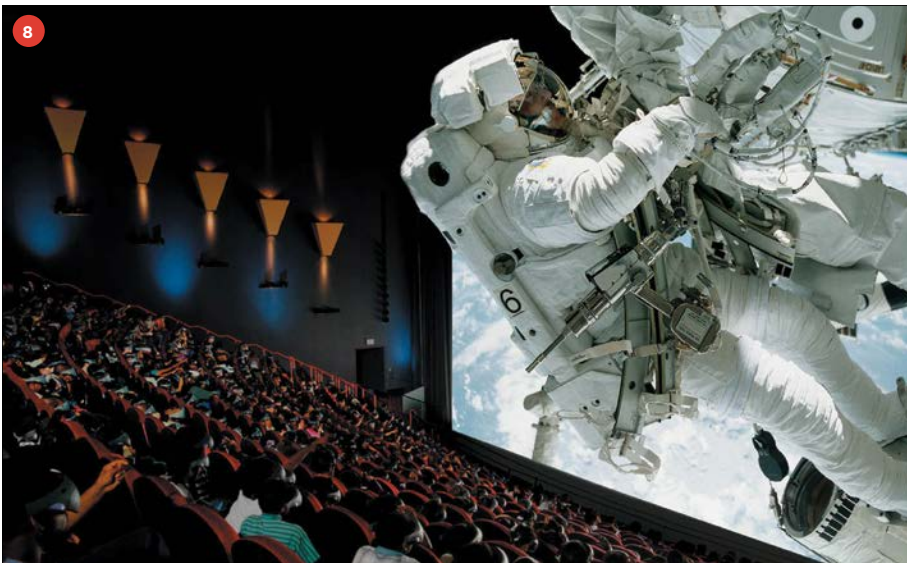
## AN UNPARALLELED DINING EXPERIENCE

An exceptional dining experience focusing on wild game, field and stream to table, vegan and vegetarian fare, daily 5-course hunter or gatherer tasting menu, happy hour and late night, local beer, and well-crafted cocktails. Our culinary team produces seasonal menus, and we work with multiple farms harvesting ethically sourced game animals and local ingredients.



320 E. Tennessee St.  
(850) 765-1887  
HuntsmanTallahassee.com

8



## THE CHALLENGER LEARNING CENTER: TALLAHASSEE'S EDU-TAINMENT DESTINATION

The Challenger Learning Center features an IMAX 3D Movie Theatre, the Fogg Planetarium and a space mission simulator.

Hollywood Movies | Educational Documentaries | Planetarium Shows  
Weekend Events | Camps | Memberships  
Field Trips | Birthday Parties | Corporate Team Building | STEAM Programs  
Facility Rentals



200 S. Duval St.  
(850) 645-7827  
ChallengerTLH.com





# Enjoy These Fun Excursions

Day Trips from Florida's Capital City

Extend your stay and explore the welcoming communities surrounding Tallahassee with these unique Day Trips.

**Wakulla Springs State Park**  
*15 miles south of Tallahassee*  
 One of the world's largest and deepest freshwater springs, Wakulla Springs is renowned for its crystal-clear waters and diverse wildlife. Enjoy a swim in the year-round 70-degree waters, take a jungle boat tour, and spot manatees during the colder months.

**St. Marks National Wildlife Refuge**  
*20 miles south of Tallahassee*  
 This scenic wildlife refuge offers opportunities for hiking, birdwatching, and enjoying nature. Located on the coast, it is home to one of the oldest lighthouses in Florida.

**Panacea, Florida**  
*30 miles south of Tallahassee*  
 Explorers of all ages will enjoy time at the Gulf Specimen Marine Laboratory in Panacea. Interact at touch tanks and learn about regional marine creatures such as seahorses, hermit crabs, emerald-eyed spiny box fish, and more.

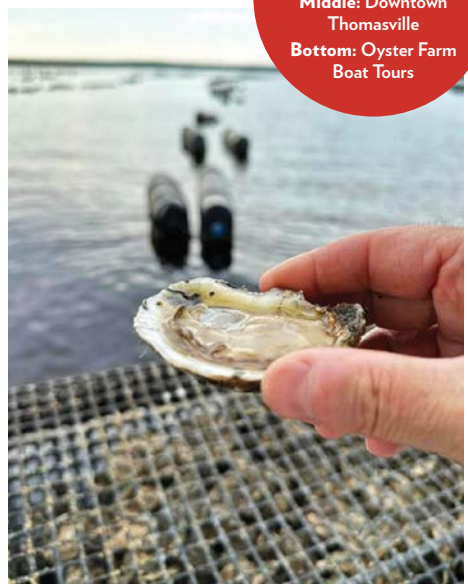
**Apalachee Bay**  
*30 miles south of Tallahassee*  
 Oyster Farm tours with Captain Cole of Southern Oyster Farms, provides visitors a 1.5-hour educational and

tasting experience on the water in Apalachee Bay. Participants explore oyster farming, learn to shuck oysters, and taste fresh oysters on-site. The tour is led by experienced guides and is limited to six passengers.

**Thomasville, Georgia**  
*35 miles north of Tallahassee*  
 Located just across the Georgia state line, this small town features quaint shops and restaurants that line the brick-paved streets. A trip to Thomasville wouldn't be complete without a trip to Sweet Grass Dairy Cheese Shop for a taste of farm-fresh artisanal cheese.

**Florida Caverns State Park**  
*70 miles west of Tallahassee*  
 The only state park in Florida where visitors can take a guided tour through a large cave system and explore the geological beauty of Florida's caverns.

**Apalachicola, Florida**  
*80 miles southwest of Tallahassee*  
 This charming coastal town is famous for its bustling seafood houses, historic buildings, and weather-worn shrimp boats. Enjoy fresh seafood, shopping, craft breweries, and picturesque streets.



**Top:** Lighthouse at St. Marks National Wildlife Refuge  
**Middle:** Downtown Thomasville  
**Bottom:** Oyster Farm Boat Tours



PHOTOS BY GLENN HASTINGS (ST. MARKS) AND COURTESY OF THOMASVILLE VISITORS CENTER AND OYSTER FARM TOURS

# PEBBLE HILL PLANTATION



## COME TOUR WITH US

A prime example of a 20th-century country estate, a visit to Pebble Hill Plantation is more than a tour...it is a rewarding and enriching experience. Whether your interest is history, art, antiques, or natural outdoor beauty, you will find it all at Pebble Hill.

Art | Gardens | Antiques | History



1251 US Hwy. 319 S.  
Thomasville, GA  
(229) 226-2344  
[PebbleHill.com](http://PebbleHill.com)

# MIDTOWN



**1 BARB'S GOURMET BRITTLES**

1671 N. Monroe St., Cottage 6A  
(850) 385-9839  
[BarbsBrittles.com](http://BarbsBrittles.com)



**2 BELLA BELLA**

123 E. 5th Ave.  
(850) 412-1114  
[TheBellaBella.com](http://TheBellaBella.com)



**3 CRAFTY CRAB**

1241 Apalachee Parkway, (850) 671-2722  
2226 N. Monroe St., (850) 385-9888  
1964 W. Tennessee St., #5, (850) 575-2722, (850) 576-2722  
1900 Capital Circle NE, (850) 656-2722, (850) 656-2888  
[CraftyCrabRestaurant.com](http://CraftyCrabRestaurant.com)



**4 EARTH REMEDIES**

310 E. Bradford Road  
(850) 727-5377  
[EarthRemediesSpa.com](http://EarthRemediesSpa.com)



**5 EL JALISCO**

SouthWood, (850) 727-0094  
Apalachee Parkway, (850) 765-4680  
North Monroe, (850) 878-0800  
Kerry Forest, (850) 668-1002



**6 HOPKINS' EATERY**

1415 Market St., (850) 668-0311  
1660-9 N. Monroe St., (850) 386-4258  
1208 Capital Circle SE, (850) 325-6422  
[HopkinsEatery.com](http://HopkinsEatery.com)



**7 MASA**

1650 N. Monroe St., (850) 727-4183  
619 S. Woodward Ave., (850) 727-8909  
[MasaTallahassee.com](http://MasaTallahassee.com)



**8 NATIVE SPIRIT GEMS & JEWELRY**

1240 Thomasville Road, #102  
(850) 727-8448  
FB @NativeSpiritGems&Jewelry  
IG @NativeSpiritGems&Jewelry



**9 RICCARDO'S**

1950 Thomasville Road  
(850) 386-3988  
[RiccardosTally.com](http://RiccardosTally.com)



**10 TABLE 23**

1215 Thomasville Road  
(850) 329-2261  
[Table23Tally.com](http://Table23Tally.com)





## FLAVORFUL MENU

Crafty Crab offers the freshest seafood and most authentic recipes in the area. When you walk into our restaurant, you'll immediately experience Southern charm and a friendly, welcoming atmosphere to make you feel at home.



1241 Apalachee Parkway, (850) 671-2722  
 2226 N. Monroe St., (850) 385-9888  
 1900 Capital Circle NE,  
 (850) 656-2722, (850) 656-2888  
 1964 W. Tennessee St. #5,  
 (850) 575-2722, (850) 576-2722  
[CraftyCrabRestaurant.com/  
 location/tallahassee](http://CraftyCrabRestaurant.com/location/tallahassee)



## FAMILY OWNED SINCE 1999

At Riccardo's, our mission statement is a simple one. "Quality, affordable, Italian food served in a clean, efficient and courteous environment." Serving over 25 craft beers and 30 wines. Secret bread made fresh daily in-house.

Lunch Tues-Fri, 11 am-2 pm  
 Dinner Tues-Sat, 5-9 pm



1950 Thomasville Road  
 (850) 386-3988  
[RiccardosTally.com](http://RiccardosTally.com)



## EL JALISCO

Our mission is the same as our passion: to serve the most delicious Mexican Cuisine at four great locations. We invite you to stop by for our world-famous fajitas.



SouthWood, (850) 727-0094  
 Apalachee Pkwy, (850) 765-4680  
 North Monroe, (850) 878-0800  
 Kerry Forest, (850) 668-1002



## EAST MEETS WEST

A fresh take on Pan-Asian cuisine and sushi. Join us for lunch & dinner. Extensive selection of wine, beer & sake.



Masa  
 1650 N. Monroe St.  
 (850) 727-4183

Little Masa  
 619 S. Woodward Ave., #105  
 (850) 727-8909  
[MasaTallahassee.com](http://MasaTallahassee.com)





## A SOUTHERN PORCH, TABLE AND BAR

Table 23 boasts Southern hospitality with culinary and craft drink options that are as diverse as the community it calls home.



1215 Thomasville Road  
(850) 329-2261  
Table23Tally.com



## IT'S ALL HOMEMADE

Traveling? Stop by Barb's Gourmet Brittles to share the best taste of Tallahassee. Barb uses her candy brittle bits to create gourmet treats like homemade brittle ice cream, cookies, popcorn and pralines. Over 25 different flavors everyone will love.



1671 N. Monroe St., Cottage 6A  
(850) 385-9839  
BarbsBrittles.com



## FROM OUR FAMILY TO YOURS

Established in 2001, Bella Bella has been welcoming Tallahassee residents and its many visitors. We offer dine-in, take-out, private dining and catering. Join or give us a call! We look forward to serving you!



123 E. 5th Ave.  
(850) 412-1114  
TheBellaBella.com



## HOPKINS' EATERY

Hopkins' Eatery offers a large variety of delicious hot and cold sandwiches, soups, salads and sweets.

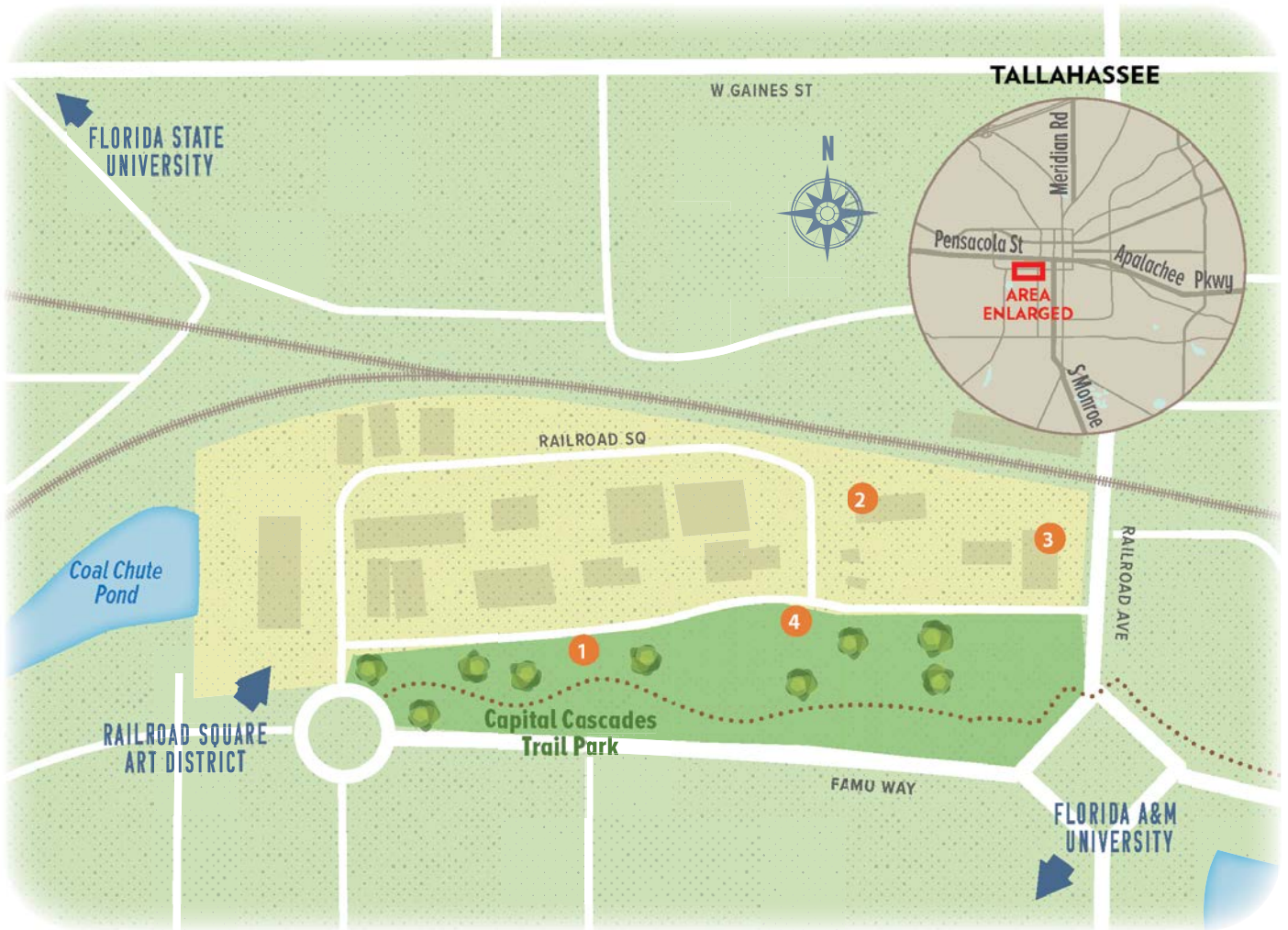
Vegetarian options are available at all three locations.

Family owned and operated for 42 years!



1415 Market St., (850) 668-0311  
1660-9 N. Monroe St., (850) 386-4258  
1208 Capital Circle SE, (850) 325-6422  
HopkinsEatery.com

# GAINES STREET • RAILROAD SQUARE



**1 ABLE ARTISTS GALLERY AND GICLÉE PRINTING**

615-3 Railroad Square  
(850) 745-5013  
AbleArtists.org



**2 SWEET BOOZY CAKES BAKERY & CAFE**

653 Railroad Square  
(850) 786-1741  
SweetBoozyCakes.com



**3 TALLULAH**

1000 Railroad Ave.,  
Unit 103  
(850) 727-5708  
TallahSmokes.com



**4 THE OTHER SIDE VINTAGE**

607 Railroad Square  
(850) 224-6666  
TheOtherSideVintage.com







## THE OTHER SIDE VINTAGE

Embrace your funky side at The Other Side Vintage. Discover unique, quirky, retro finds from fashion to home decor, gifts and more. This swanky shop is located in the Railroad Square Art District.



607 Railroad Square  
(850) 224-6666  
[TheOtherSideVintage.com](http://TheOtherSideVintage.com)



## GETHAPPY!

TALLULAH offers top-tier CBD, THC, and Mushroom products. Our selection is sourced from leading U.S. brands, ensuring authenticity and quality. With nine locally owned and operated locations, we're your trusted destination for all your smoking essentials. Try our world-famous THC slushies!

# TALLULAH

CBD • MUSHROOMS • THC 

1306 Thomasville Road  
(850) 727-5708  
[TallulahSmokes.com](http://TallulahSmokes.com)



## TALLAHASSEE'S ART DISTRICT

Explore the mural-splashed creative haven of the most eclectic, locally owned businesses — shops, galleries, casual food and beverage options — all housed within World War II-era warehouses.

Shop local.  
Experience uniqueness.

**RAILROAD SQUARE**  
Art District



[RailroadSquare.com](http://RailroadSquare.com)

@RailroadSquare



# MARKET DISTRICT • I-10 AT THOMASVILLE RD



**1 CAFÉ DE MARTÍN**  
2743 Capital Circle NE  
(850) 900-5969  
CafeDeMartin.com



**2 DRURY PLAZA HOTEL**  
1690 Raymond Diehl Road  
(850) 297-0505  
DruryHotels.com



**3 HEARTH & SOUL**  
1410 Market St.  
(850) 894-SOUL  
HearthAndSoul.com



**4 HOPKINS' EATERY**  
1415 Market St.  
(850) 668-0311  
1660-9 N. Monroe St.  
(850) 386-4258  
1208 Capital Circle SE  
(850) 325-6422  
HopkinsEatery.com



**5 KIKU JAPANESE FUSION**  
3491 Thomasville Road  
(850) 222-5458  
KikuBogo.com



**6 LOFTY PURSUITS**  
1355 Market St.  
(850) 521-0091  
LoftyPursuits.com



**7 MY FAVORITE THINGS**  
1410 Market St., C3  
(850) 681-2824  
(800) 983-2266  
ShopMFT.com



**8 NIC'S TOGGERY**  
The Gallery (850) 893-9599  
Downtown (850) 222-0687  
Big & Tall (850) 385-6866  
NicsToggerly.com



**9 TALLULAH**  
1410 Market St., C-4  
(850) 727-5708  
TallulahSmokes.com



**10 WALK-ON'S SPORTS BISTREAUX**  
3390 Capital Circle NE  
(850) 597-7736  
Walk-Ons.com





## LOFTY PURSUITS BRUNCH & ICE CREAM

A Tallahassee tradition for 30 years. The best ice cream in town, delicious daily brunch, a selection of classic toys and handcrafted hard candy made right in front of you on equipment from the 1800s.

Ice Cream and Candy 7 am–10 pm.

Brunch from 7 am–1:30 pm every day. Brunch for dinner Friday and Saturday until 7:30 pm.



1355 Market St.  
(850) 521-0091  
LoftyPursuits.com



## SERVING WITH LOVE

Kiku Japanese Fusion

Your No. 1 choice for Japanese food

Voted Best Sushi 9 years in a row

Home of the BOGO special



**Kiku**  
JAPANESE FUSION®

3491 Thomasville Road, Ste. 12  
(850) 222-5458  
KikuBogo.com



## A TASTE OF LOUISIANA

We start every dish from scratch and use fresh ingredients to bring our mouthwatering, Cajun cuisine to life. And whether you're here for dinner with the family, date night, cocktails with the girls or to watch a game on the big screen, we're always happy to share our Louisiana culture with you.



3390 Capital Circle NE  
(850) 597-7736  
Walk-Ons.com



## FLAVORS OF PERU IN TALLAHASSEE

Café de Martín brings the flavors of Peru to Tallahassee. Our menu is diverse and includes soups, salads, sandwiches, Peruvian classics and more! Full bar now open. Serving lunch and dinner. Sunday brunch.



2743 Capital Circle NE  
(850) 900-5969  
CafeDeMartin.com



## TALLAHASSEE'S FAVORITE GIFT BOUTIQUE

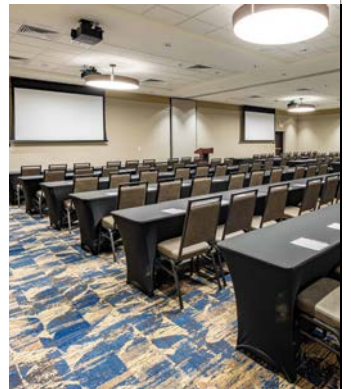
Celebrating our 40 year anniversary!  
Specializing in gifts for the home,  
body and family. Personal services  
in bridal registry, stationery,  
invitations and more.



1410 Market St., C3  
(850) 681-2824  
(800) 983-2266  
ShopMFT.com



# DRURY PLAZA HOTEL



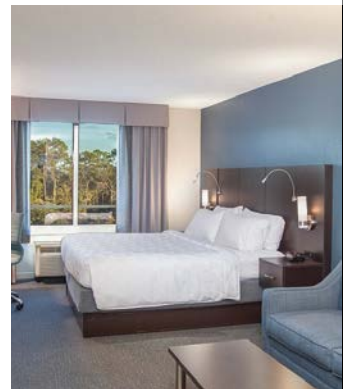
## NOW OPEN

Free Hot Breakfast  
Free Hot Food & Cold Beverages at 5:30 Kickback®  
Free Wi-Fi Throughout the Hotel  
The Kitchen + Bar Open Late, Every Night  
2,800+ sq. ft. of Meeting Space

**DRURY**  
PLAZA HOTEL.

1690 Raymond Diehl Road  
(850) 297-0505  
DruryHotels.com

# HOLIDAY INN & SUITES TALLAHASSEE CONFERENCE CENTER NORTH



## ROOM FOR WORK & PLAY

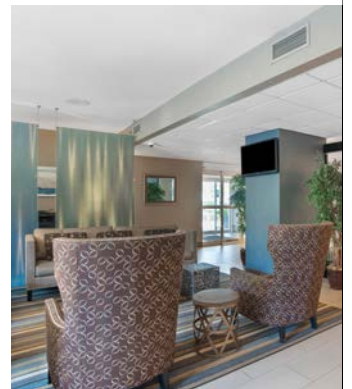
Whether you are here for business, sporting events, school functions, Legislative Session, or just passing through, we provide comfortable and convenient accommodations for every guest's needs. Come stay with us!

Breakfast Buffet | On-site Restaurant | Outdoor Pool & Hot Tub  
Free Parking (Trucks/Buses Welcome) | Fitness Center | Meeting Space

 **Holiday Inn  
& Suites**  
AN IHG HOTEL

2725 Graves Road  
(850) 536-2000  
[HolidayInn.com/Tallahassee10](https://www.HolidayInn.com/Tallahassee10)

# BEST WESTERN PLUS TALLAHASSEE NORTH



## TOP-RANKED HOTEL

Experience Tallahassee to the fullest and stay at the No. 2 hotel in town for “Best Value” and “Traveler Ranked” overall – the Best Western Plus Tallahassee North Hotel. Enjoy exceptional service, modern rooms and amenities, a delicious complimentary breakfast, the sparkling outdoor pool, and more. Book your stay today with one of Tallahassee’s best!



**Best  
Western  
PLUS.**




2727 Graves Road  
(850) 562-7200  
BestWestern.com



# Where to Stay

AC Hotel by Marriott – Tallahassee at the Capitol

## ICON KEY

-  Shuttle Service
-  Pet-Friendly
-  Complimentary Breakfast

**CLARION POINTE TALLAHASSEE – STATE CAPITOL**  
2702 N. Monroe St.  
(850) 727-5790  [ChoiceHotels.com](http://ChoiceHotels.com)

**COUNTRY INN & SUITES NORTHWEST TALLAHASSEE**  
3096 N. Monroe St.  
(850) 701-2850  [CountryInns.com](http://CountryInns.com)

**DAYS INN & SUITES BY WYNDHAM TALLAHASSEE CONF CENTER I-10**  
2900 N. Monroe St.  
(850) 727-5541  [WyndhamHotels.com/Days-Inn](http://WyndhamHotels.com/Days-Inn)

**ECONO LODGE NORTH**  
2681 N. Monroe St.  
(850) 385-6155   [EconoLodge.com](http://EconoLodge.com)

**FAIRFIELD INN TALLAHASSEE NORTH/I-10**  
3219 N. Monroe St.  
(850) 562-8766  [Fairfield.Marriott.com](http://Fairfield.Marriott.com)

**HOLIDAY INN & SUITES TALLAHASSEE CONFERENCE CENTER NORTH**  
2725 Graves Rd.  
(850) 536-2000 [IHG.com](http://IHG.com)

**HOLIDAY INN EXPRESS TALLAHASSEE UNIVERSITY-CENTRAL**  
1308 W. Brevard St.  
(850) 900-5115  [IHG.com](http://IHG.com)

**HOWARD JOHNSON BY WYNDHAM TALLAHASSEE**  
2726 N. Monroe St.  
(850) 386-5000  [WyndhamHotels.com/HoJo](http://WyndhamHotels.com/HoJo)

**LA QUINTA INN TALLAHASSEE NORTH**  
2905 N. Monroe St.  
(850) 385-7172   [WyndhamHotels.com/LaQuinta](http://WyndhamHotels.com/LaQuinta)

**LOYALTY INN**  
2738 N. Monroe St.  
(844) 209-3584  [ReservationCounter.com](http://ReservationCounter.com)

## Downtown

**AC HOTEL BY MARRIOTT – TALLAHASSEE AT THE CAPITOL**  
801 S. Gadsden St.  
(850) 392-7700   [AC-Hotels.Marriott.com](http://AC-Hotels.Marriott.com)

**ALOFT TALLAHASSEE DOWNTOWN**  
200 N. Monroe St.  
(850) 513-0313   [AloftTallahassee.com](http://AloftTallahassee.com)

**COMFORT SUITES**  
1026 Apalachee Pkwy.  
(850) 224-3200   [ChoiceHotels.com](http://ChoiceHotels.com)

**COURTYARD BY MARRIOTT CAPITOL**  
1018 Apalachee Pkwy.  
(850) 222-8822  [Courtyard.Marriott.com](http://Courtyard.Marriott.com)

**DOUBLETREE BY HILTON HOTEL TALLAHASSEE**  
101 S. Adams St.  
(850) 224-5000  [DoubleTree.com](http://DoubleTree.com)

**FOUR POINTS BY SHERATON TALLAHASSEE DOWNTOWN**  
316 W. Tennessee St.  
(850) 422-0071   [Four-Points.Marriott.com](http://Four-Points.Marriott.com)

**HAMPTON INN & SUITES TALLAHASSEE CAPITOL-UNIVERSITY**  
824 Railroad Ave.  
(850) 692-7150  [HamptonInn.com](http://HamptonInn.com)

**HOME2 SUITES BY HILTON TALLAHASSEE STATE CAPITOL**  
210 S. Magnolia Dr.  
(850) 402-8900   [Home2Suites.com](http://Home2Suites.com)

**HOTEL DUVAL, AUTOGRAPH COLLECTION**  
415 N. Monroe St.  
(850) 224-6000  [HotelDuval.com](http://HotelDuval.com)

**HOTEL INDIGO TALLAHASSEE – COLLEGETOWN**  
826 W. Gaines St.  
(850) 210-0008  [HotelIndigo.com/tallahasseeif](http://HotelIndigo.com/tallahasseeif)

**HYATT HOUSE TALLAHASSEE CAPITOL – UNIVERSITY**  
1100 Railroad Ave.  
(850) 222-0039  [Hyatt.com](http://Hyatt.com)

**OYO HOTEL TALLAHASSEE DOWNTOWN**  
745 N. Monroe St.  
(417) 281-0807  [OYORooms.com](http://OYORooms.com)

**RESIDENCE INN UNIVERSITIES AT THE CAPITOL**  
600 W. Gaines St.  
(850) 329-9080   [Residence-Inn.Marriott.com](http://Residence-Inn.Marriott.com)

**STAYAPT SUITES TALLAHASSEE-CAPITOL**  
950 Desoto Park Dr.  
(850) 783-9600  [Stayapt.com](http://Stayapt.com)

## Northwest

**BAYMONT INN & SUITES TALLAHASSEE**  
3210 N. Monroe St.  
(850) 296-1316  [WyndhamHotels.com/Baymont](http://WyndhamHotels.com/Baymont)

**BEST WESTERN PLUS TALLAHASSEE NORTH**  
2727 Graves Rd.  
(850) 562-7200  [BestWestern.com](http://BestWestern.com)

**B.O.B. HOTELS – BOUTIQUE ON BUDGET**  
1695 Capital Circle NW  
(850) 575-5885 [TheBOBHotels.com](http://TheBOBHotels.com)

**CANDLEWOOD SUITES TALLAHASSEE**  
2815 Lakeshore Dr.  
(850) 597-7000  [CandlewoodSuites.com](http://CandlewoodSuites.com)



**QUALITY INN  
NORTH MONROE**  
3090 N. Monroe St.  
(850) 562-2378 🐾 🍷  
[ChoiceHotels.com/Quality-Inn](http://ChoiceHotels.com/Quality-Inn)

**RED ROOF INN**  
2930 Hospitality St.  
(850) 385-7884 🐾  
[RedRoof.com](http://RedRoof.com)

**SEVEN HILLS SUITES**  
2735 N. Monroe St.  
(850) 385-2038 🐾 🍷  
[SevenHillsSuites.com](http://SevenHillsSuites.com)

**SLEEP INN & SUITES**  
3216 N. Monroe St.  
(850) 562-3800 🐾 🍷  
[SleepInnSuites-Tallahassee.com](http://SleepInnSuites-Tallahassee.com)

**STUDIO 6**  
2801 N. Monroe St.  
(850) 386-8286 🐾 🍷  
[Studio6.com](http://Studio6.com)

**SUBURBAN  
STUDIOS**  
522 Silver Slipper Ln.  
(850) 386-2121 🐾  
[ChoiceHotels.com/Suburban](http://ChoiceHotels.com/Suburban)

## Northeast

**COURTYARD BY  
MARRIOTT NORTH**  
1972 Raymond Diehl Rd.  
(850) 422-0600 🍷 🍷  
[Courtyard.Marriott.com](http://Courtyard.Marriott.com)

**DRURY PLAZA HOTEL  
TALLAHASSEE**  
1690 Raymond Diehl Rd.  
(850) 297-0505  
[DruryHotels.com](http://DruryHotels.com)

**EXTENDED  
STAY AMERICA –  
TALLAHASSEE**  
1950 Raymond Diehl Rd.  
(850) 383-1700 🐾 🍷  
[ExtendedStayAmerica.com](http://ExtendedStayAmerica.com)

**HAMPTON INN AND SUITES  
I-10/THOMASVILLE RD.**  
3388 Lonnbladh Rd.  
(850) 574-4900 🍷  
[HamptonInn.com](http://HamptonInn.com)

**HILTON GARDEN INN  
TALLAHASSEE**  
3333 Thomasville Rd.  
(850) 385-3553  
[HiltonGardenInn.com](http://HiltonGardenInn.com)

**HOLIDAY INN EXPRESS  
TALLAHASSEE I-10 EAST**  
1653 Raymond Diehl Rd.  
(850) 386-7500 🍷  
[HolidayInnExpress.com](http://HolidayInnExpress.com)

**LITTLE ENGLISH  
GUEST HOUSE BED  
& BREAKFAST**  
737 Timberlane Rd.  
(850) 907-9777 🍷  
[LittleEnglishGuestHouse.com](http://LittleEnglishGuestHouse.com)

**RED ROOF INN –  
TALLAHASSEE EAST**  
6737 Mahan Dr.  
(850) 656-2938 🐾 🍷  
[RedRoof.com](http://RedRoof.com)

**RESIDENCE INN  
BY MARRIOTT**  
1880 Raymond Diehl Rd.  
(850) 422-0093 🐾 🍷  
[Residence-Inn.Marriott.com](http://Residence-Inn.Marriott.com)

**SPRINGHILL  
SUITES NORTH**  
1481 Timberlane Rd.  
(850) 297-0270 🍷  
[SpringhillSuites.Marriott.com](http://SpringhillSuites.Marriott.com)

**STAYBRIDGE SUITES**  
1600 Summit Lake Dr.  
(850) 219-7000 🐾 🍷  
[StaybridgeSuites.com](http://StaybridgeSuites.com)

**THE CAPITOL INN**  
1102 N. Gadsden St.  
(850) 328-1439  
[TheCapitolInn.lodgify.com](http://TheCapitolInn.lodgify.com)

**TOWNEPLACE SUITES  
BY MARRIOTT**  
1876 Capital Circle NE  
(850) 219-0122 🐾 🍷  
[TownePlaceSuites.Marriott.com](http://TownePlaceSuites.Marriott.com)

**TRYP BY WYNDHAM**  
1978 Village Green Way  
(850) 204-4000  
[TRYPTallahassee.com](http://TRYPTallahassee.com)

## Southeast

**BEST WESTERN  
TALLAHASSEE  
DOWNTOWN INN & SUITES**  
2016 Apalachee Pkwy.  
(850) 656-6312 🐾 🍷  
[BestWestern.com](http://BestWestern.com)

**CASA BELLA INN & SUITES**  
2850 Apalachee Pkwy.  
(850) 878-5099 🐾 🍷  
[CasaBellaSuites.com](http://CasaBellaSuites.com)

**ECONO LODGE EAST**  
809 Apalachee Pkwy.  
(850) 877-2755 🍷  
[EconoLodge.com](http://EconoLodge.com)

**EXTENDED STAY  
AMERICA – EAST**  
3530 Apalachee Pkwy.  
(850) 325-6473 🐾  
[ExtendedStayAmerica.com](http://ExtendedStayAmerica.com)

**FAIRFIELD INN & SUITES  
TALLAHASSEE CENTRAL**  
2997 Apalachee Pkwy.  
(850) 210-1210 🍷  
[Fairfield.Marriott.com](http://Fairfield.Marriott.com)

**HAMPTON INN  
TALLAHASSEE CENTRAL**  
2979 Apalachee Pkwy.  
(850) 309-1300 🍷  
[HamptonInn.com](http://HamptonInn.com)

**HILTON GARDEN INN  
TALLAHASSEE CENTRAL**  
1330 Blair Stone Rd.  
(850) 893-8300  
[HiltonGardenInn.com](http://HiltonGardenInn.com)

**HOLIDAY INN  
TALLAHASSEE EAST  
CAPITOL – UNIVERSITIES**  
2003 Apalachee Pkwy.  
(850) 792-8300 🍷  
[HolidayInn.com](http://HolidayInn.com)

**HOMEWOOD  
SUITES BY HILTON**  
2987 Apalachee Pkwy.  
(850) 402-9400 🐾 🍷  
[HomewoodSuites.com](http://HomewoodSuites.com)

**MOTEL 6 DOWNTOWN**  
1027 Apalachee Pkwy.  
(850) 877-6171 🐾 🍷  
[Motel6.com](http://Motel6.com)

**SPRINGHILL SUITES  
BY MARRIOTT**  
1300 Executive Center Dr.  
(850) 325-1103 🍷  
[SpringhillSuites.Marriott.com](http://SpringhillSuites.Marriott.com)

**TRU BY HILTON  
TALLAHASSEE CENTRAL**  
2814 Apalachee Pkwy.  
(850) 792-5400  
[Tru.Hilton.com](http://Tru.Hilton.com)

**WYNDHAM GARDEN  
TALLAHASSEE CAPITOL**  
1355 Apalachee Pkwy.  
(850) 999-7348 🐾  
[WyndhamHotels.com/  
Wyndham-Garden](http://WyndhamHotels.com/Wyndham-Garden)

## West

**BUDGET INN**  
1402 W. Tennessee St.  
(850) 224-4174  
[BudgetInnTallahassee.com](http://BudgetInnTallahassee.com)

**CACTUS MOTEL**  
2633 W. Tennessee St.  
(850) 576-2222

**DAYS INN  
UNIVERSITY CENTER**  
1350 W. Tennessee St.  
(850) 848-5733 🐾 🍷  
[WyndhamHotels.com/Days-Inn](http://WyndhamHotels.com/Days-Inn)

**EL CAMINO MOTEL**  
3705 Woodville Hwy.  
(850) 877-7810  
[ElCaminoMotelTallahassee.top](http://ElCaminoMotelTallahassee.top)

**EXTENDED STAY  
AMERICA – NORTHWEST**  
5344 W. Tennessee St.  
(850) 580-4024 🐾  
[ExtendedStayAmerica.com](http://ExtendedStayAmerica.com)

## Home Rentals

**AIRBNB**  
[Airbnb.com](http://Airbnb.com)

**VRBO**  
[VRBO.com](http://VRBO.com)

**TRIP ADVISOR  
VACATION RENTALS**  
[TripAdvisor.com/Rentals](http://TripAdvisor.com/Rentals)





Cascades Park

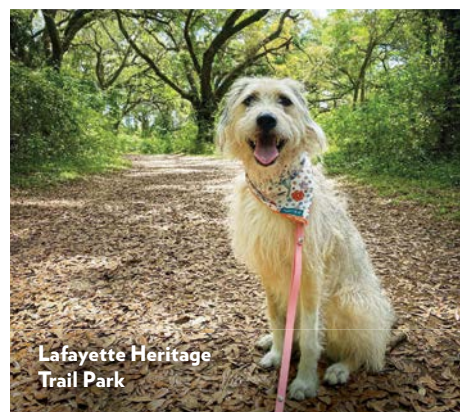
# TAIL WAGGING Tallahassee

Tallahassee welcomes four-legged family members with open paws. Pet-friendly accommodations, parks, trails, and restaurants make Tallahassee a favorite for those traveling with dogs. For more pet-friendly sites, check out [VisitTallahassee.com](http://VisitTallahassee.com).



Railroad Square Art District

DAVE BARFIELD



Lafayette Heritage Trail Park

@LITTLE\_MEEZ

## **🐾 Sit. Stay. Lay Down.**

Tallahassee offers more than 25 pet-friendly hotels as well as plenty of home-share options that offer yards where dogs can roam. Look for the in the hotel listings on pages 70-71.

## **🐾 Wanna Go for a Walk?**

With so many parks and trails, Tallahassee is a pet paradise. Favorite dog parks include Bradfordville Dog Park, J. Lee Vause Park, Tom Brown Park, All Saints District, Cascades Park, and the Downtown Chain of Parks.

## **🐾 Chow Down**

All fresco dining is enjoyable for all, especially during Tallahassee's spring and fall seasons. Many area restaurants and bars are equipped with outdoor seating and love hosting pets and their people. Find dining for you and your pup at [VisitTallahassee.com](http://VisitTallahassee.com).

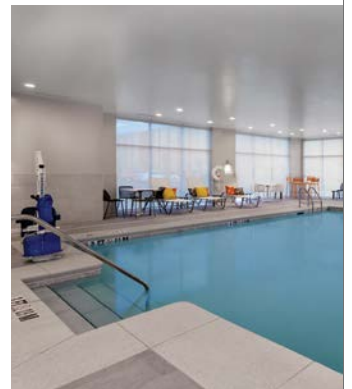
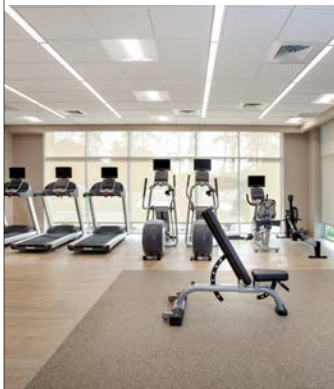


## MISSION SAN LUIS

### ***A Pet-Friendly Historical Gem***

Mission San Luis, a National Historical Landmark, offers a pet-friendly journey to the 1600s where Apalachee Natives and Spanish settlers coexisted peacefully. This reconstructed Spanish mission welcomes well-behaved dogs on leashes. Experience period-dressed interpreters bringing history to life and providing a captivating journey into the past.

# THE HOLIDAY INN TALLAHASSEE



## THE HOLIDAY INN TALLAHASSEE EAST CAPITOL - UNIVERSITIES

A welcome addition to the Apalachee Parkway path to the State Capitol Complex. This newly constructed hotel features 103 modern guest rooms, indoor pool, high-tech fitness center, restaurant with bar and over 2,700 square feet of versatile meeting space. The property is located at 2003 Apalachee Parkway and is just east of Blair Stone Road. We are three miles away from the Capitol Complex, both FSU and FAMU, the SouthWood offices and neighborhood, and close to Cascades Park and many other local sites and sports facilities.



2003 Apalachee Parkway  
(850) 792-8300  
[StayInTally.com](http://StayInTally.com)

# EXPERIENCE TALLAHASSEE HISTORY



## DISCOVER PIVOTAL MOMENTS

Explore Tallahassee and Florida history at three area museums. Mission San Luis offers a glimpse into the 17th century. The Grove Museum engages the public in a dialog about civil rights. Union Bank Museum is Florida's oldest surviving bank building.

Find Florida-themed gifts from Florida's History Shop in the State Capitol or online at [FloridasHistoryShop.com](http://FloridasHistoryShop.com).



**FLORIDA DEPARTMENT of STATE**

Mission San Luis  
2100 W. Tennessee St.

The Grove Museum  
902 N. Monroe St.

Union Bank Museum  
219 Apalachee Parkway  
[DOS.FL.gov/museums](http://DOS.FL.gov/museums)

*Historically Florida*  
Florida's History Shop

**THE  
GROVE  
MUSEUM**

*Mission San Luis*

