

Designated Canopy Roads in the Reds Hills Region

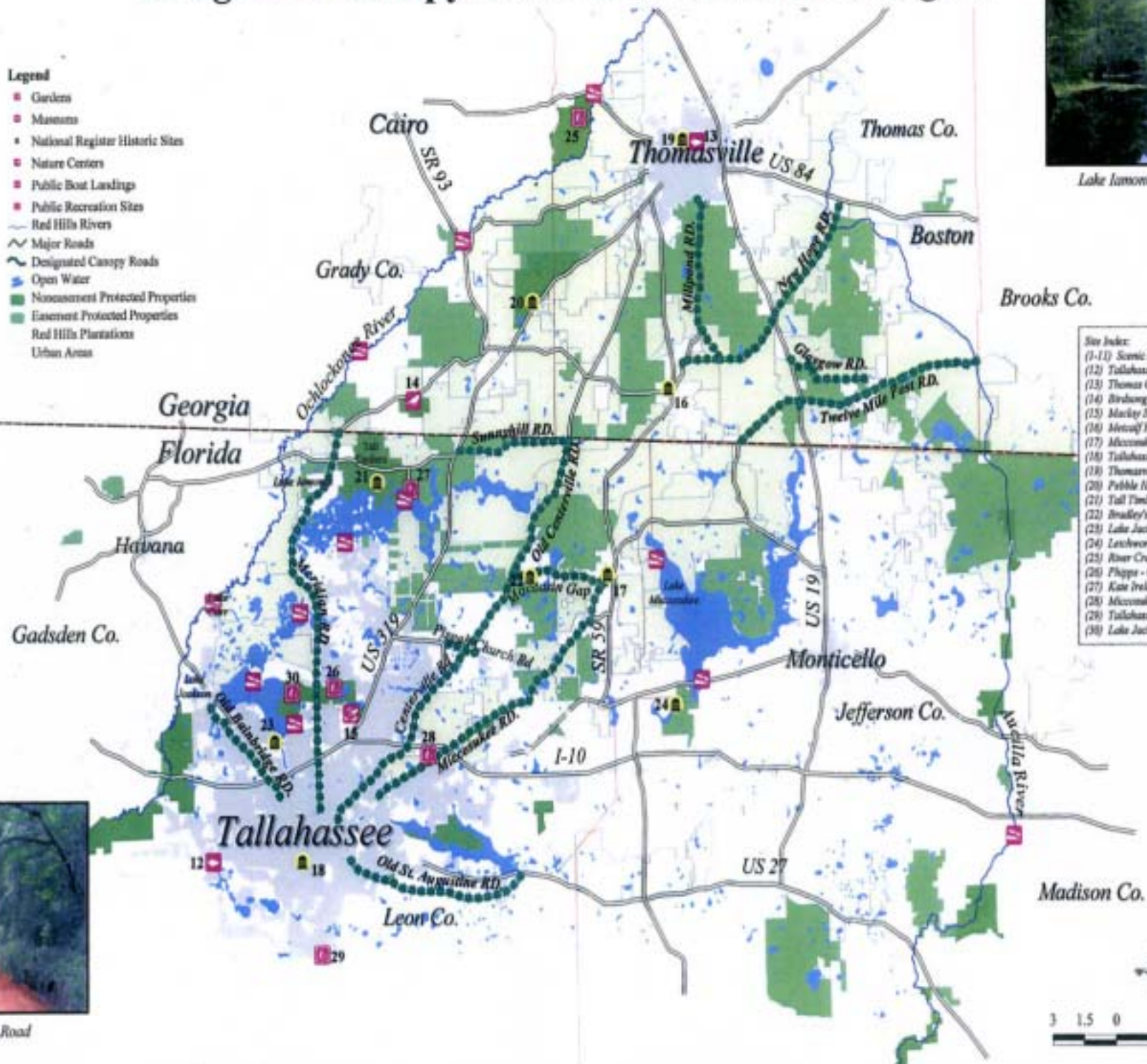


Legend

- Gardens
- Mansions
- National Register Historic Sites
- Nature Centers
- Public Boat Landings
- Public Recreation Sites
- Red Hills Rivers
- Major Roads
- - - Designated Canopy Roads
- Open Water
- Nonassessment Protected Properties
- Easement Protected Properties
- Red Hills Plantations
- Urban Areas



Lake Lamonia near Tall Timbers



- Site Index:**
- (1-11) Scenic Roadways
 - (12) Tallahassee Museum of History and Science
 - (13) Thomas County Museum of History
 - (14) Birdsong Nature Center
 - (15) Mackay State Gardens
 - (16) Moultrie Historic District
 - (17) Miccosukee Historic District
 - (18) Tallahassee Historic District
 - (19) Thomasville Historic District
 - (20) Pebble Hill Plantation
 - (21) Tall Timbers Research Station
 - (22) Bradley's Country Store
 - (23) Lake Jackson Minnie State Park
 - (24) Leitchworth Minnie State Park
 - (25) River Creek Wildlife Management Area
 - (26) Phipps - Overstreet Greenway
 - (27) Kate Ireland Park
 - (28) Miccosukee Greenway
 - (29) Tallahassee - St. Mark's Historic RR Trail
 - (30) Lake Jackson Aquatic Preserve



Twelve Mile Post Road

